

SNELLERS

ESTATE AGENTS



Burlington Road, TW7

£925,000

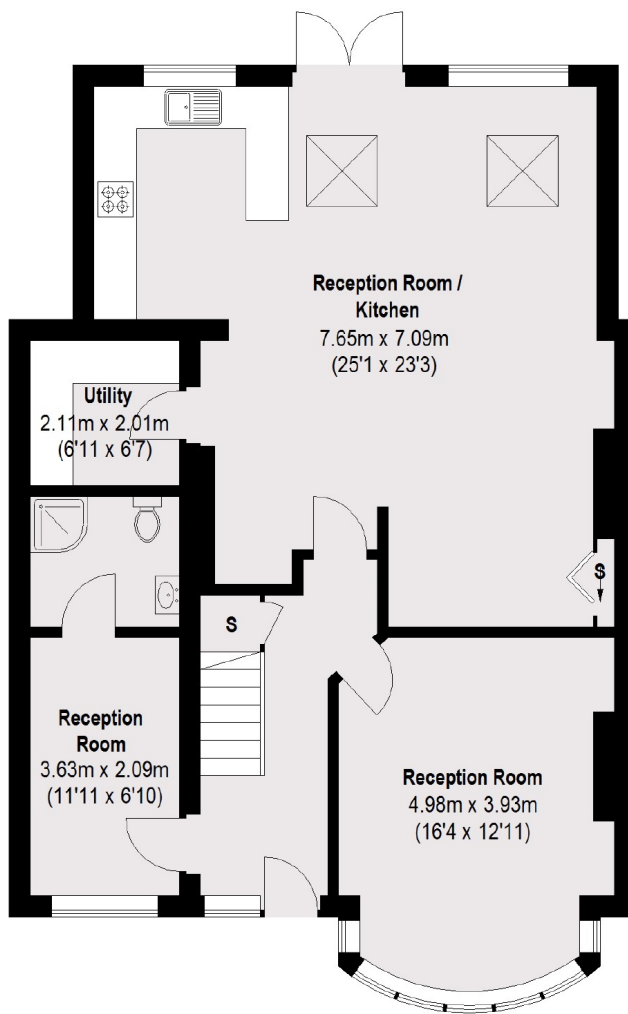
A substantial and well-presented, semi-detached four bedroom family home offering in excess of 1950 sq ft of living space located on this highly popular residential road in Isleworth.

Burlington Road is a quiet and popular residential road in close proximity to great transport links into Central London and offers access to good local schools.

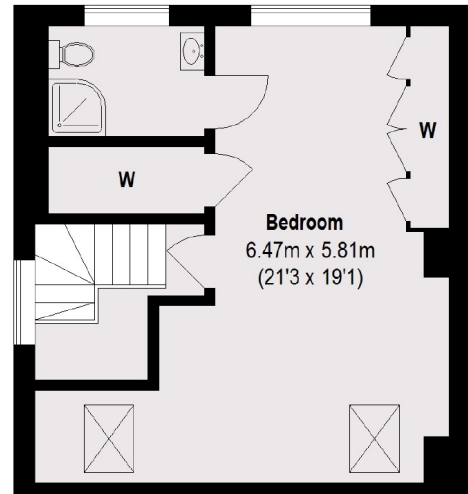
- Semi Detached • Over 1950 sq.ft • Four Bedrooms •
- Three Bathrooms • Excellent Condition • Substantial Garden •

SNELLERS

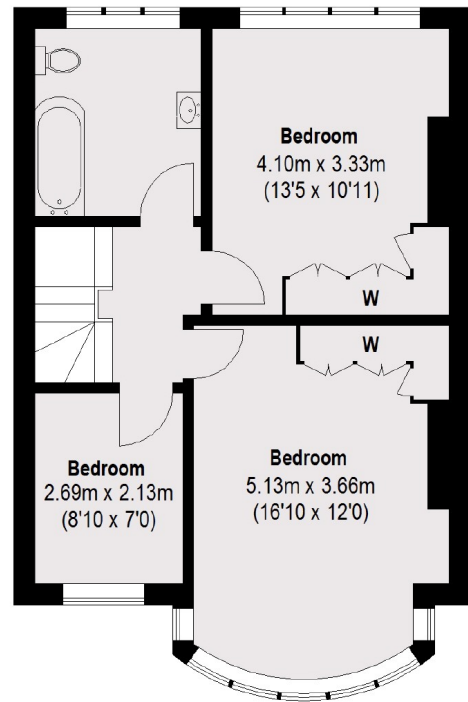
ESTATE AGENTS



Ground Floor



Second Floor



First Floor

Total area (approx.): 181.81 sq. m (1957 sq. ft)

Snellers St. Margarets Sales
36 Crown Road
St Margarets
TW1 3EH
020 8892 8008
stmargaretssales@snellers.co.uk

Energy Rating: D We aim to make our particulars both accurate and reliable. However they are not guaranteed; nor do they form part of an offer or contract. If you require clarification on any points then please contact us, especially if you're traveling some distance to view. Please note that appliances and heating systems have not been tested and therefore no warranties can be given as to their good working order