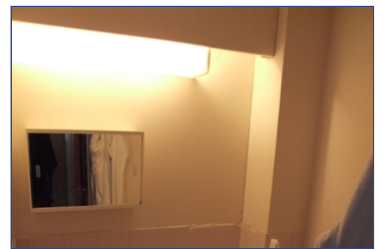
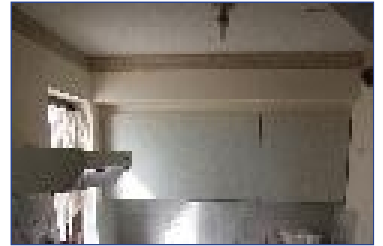


## Hawthorne Crescent, West Drayton, UB7 9PA



**£675 pcm**

Well presented large purpose built studio flat situated close to BR station, good bus links & walking distance to West Drayton High Street . The property benefits from good size separate kitchen with built in electric hob & oven, bathroom with fully fitted shower, spacious studio area and allocated parking. Available from 7th October 2019.

- Quiet Location
- Large studio area
- Near to local amenities
- Close to British Rail
- Situated near to Hillingdon Hospital
- PARKING



**Sales | Lettings | Property Management**

