



Lowfield Road, W3

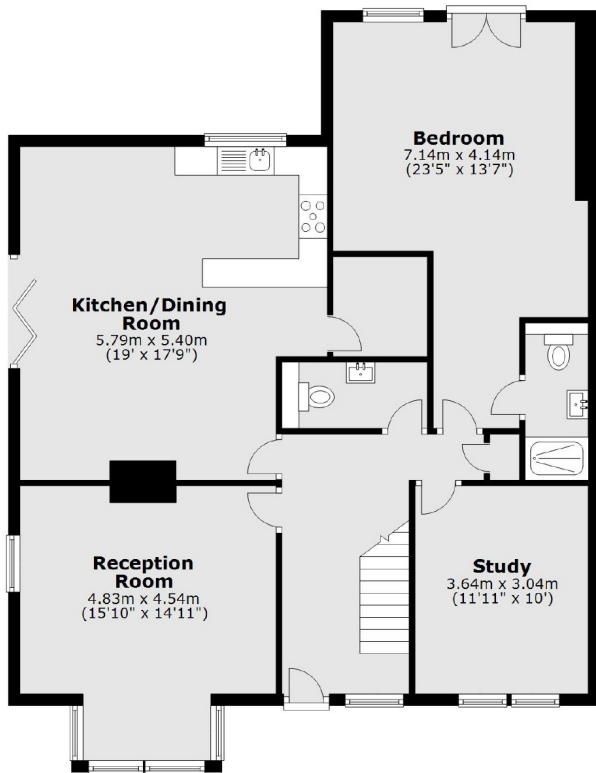
£1,150,000

A semi-detached four bedroom family home with a large wrap around garden. The property offers in excess of 1900 sq.ft of accommodation and is in immaculate condition having been refurbished throughout by the current owners.

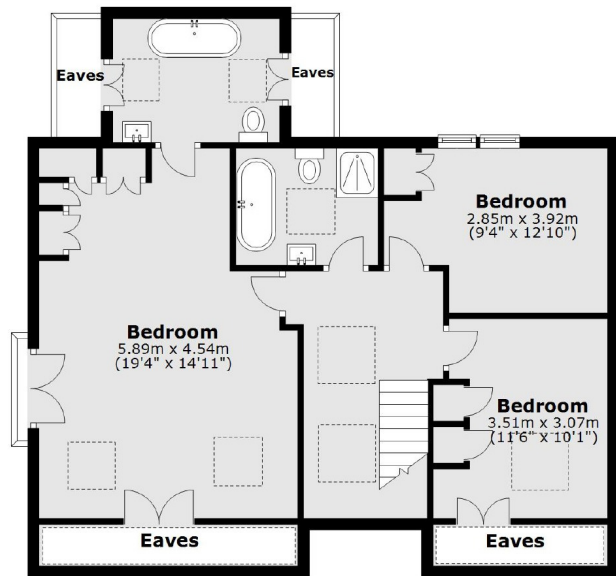
Lowfield Road is within half a mile of both West Acton station (central line) and the future Crossrail station, Acton Mainline.

- Four Bedrooms • Three Bathrooms • Large Garden •
- Excellent Condition • Semi-detached • No Onward Chain •

Ground Floor



First Floor



Total area (excluding eaves): approx. 178.3 sq. metres (1919.2 sq. feet)

Robertson Smith & Kempson Acton Sales
137 High Street, Acton,
London, W3 6LY
020 8896 3996
actonsales@robertsonsmithandkempson.co.uk

Energy Rating: C. We aim to make our particulars both accurate and reliable. However they are not guaranteed; nor do they form part of an offer or contract. If you require clarification on any points then please contact us, especially if you're traveling some distance to view. Please note that appliances and heating systems have not been tested and therefore no warranties can be given as to their good working order.