



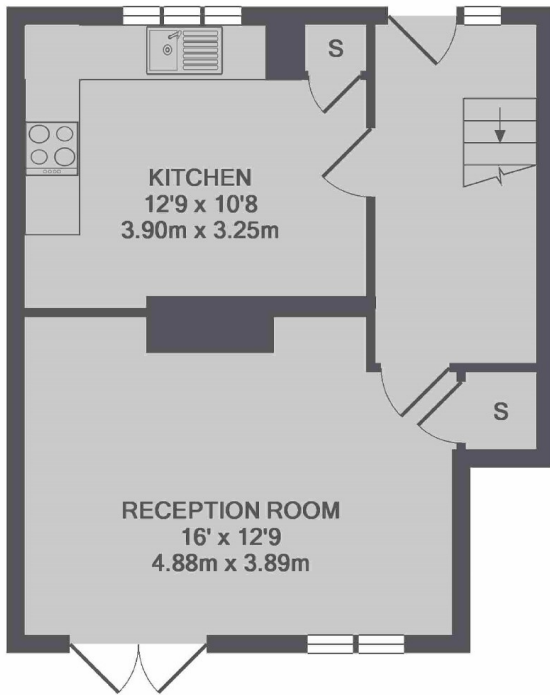
Sarsfeld Road, SW12

£2,350 PCM

A three double bedroom maisonette offering a large living space, ample storage throughout and access to a private garden. This home is suitable for professional sharers or a family.

- Split Level Maisonette
- Spacious Living Area
- Separate Kitchen
- Three Double Bedrooms
- Private Garden
- Close to Station

For further information on the costs associated with renting a property, please pop into our office or visit our website.



GROUND FLOOR



1ST FLOOR

TOTAL APPROX. FLOOR AREA 888 SQ.FT. (82.5 SQ.M.)

Jacksons Balham
8-11 Balham Station Road
London
SW12 9SG
020 8675 6565
balham.lettings@jacksonsestateagents.com

Energy Rating: D We aim to make our particulars both accurate and reliable. However they are not guaranteed; nor do they form part of an offer or contract. If you require clarification on any points then please contact us, especially if you're traveling some distance to view. Please note that appliances and heating systems have not been tested and therefore no warranties can be given as to their good working order.