



**Lanercost Road**  
**Southgate, West Sussex RH11 8YA**

**£850 PCM**

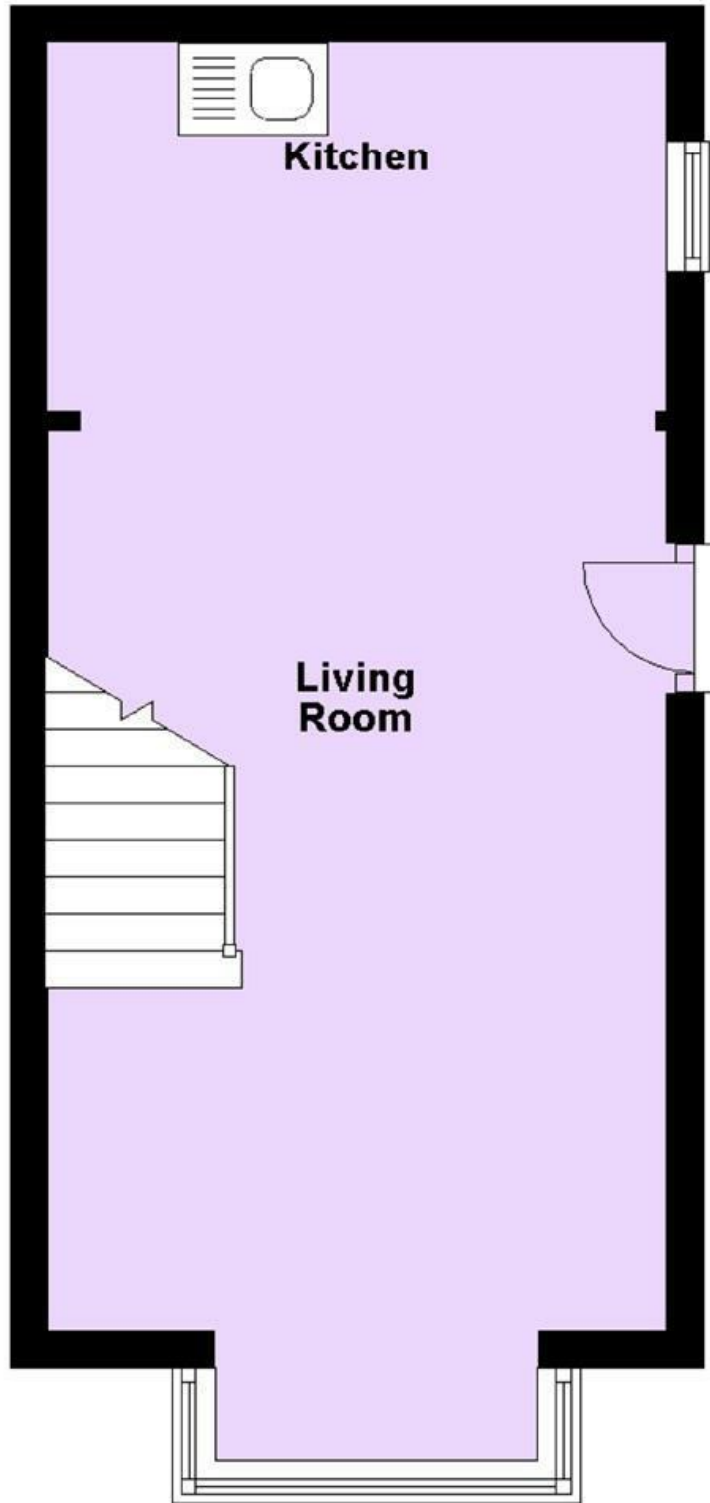
\* One double bedroom house \* Kitchen with appliances \* Modern bathroom \* superbly presented \* Walking distance to town & Crawley train station \* Available 22nd October \* unfurnished \*

## Lanercost Road, Southgate, West Sussex RH11 8YA

Members of the property ombudsman  
Members of CMP for client money protection  
security deposit equivalent 5 weeks rent  
reservation deposit equivalent of one weeks rent



# Ground Floor



| Energy Efficiency Rating                    |  | Current  | Potential  |
|---|--|--|--|
| Very energy efficient - lower running costs |  |  |  |
| (92 plus) <b>A</b>                          |  |  | <div style="text-align: center;"> <span style="font-size: 2em;">90</span> </div> |
| (81-91) <b>B</b>                            |  | <div style="text-align: center;"> <span style="font-size: 2em;">70</span> </div> |  |
| (69-80) <b>C</b>                            |  |  |  |
| (55-68) <b>D</b>                            |  |  |  |
| (39-54) <b>E</b>                            |  |  |  |
| (21-38) <b>F</b>                            |  |  |  |
| (1-20) <b>G</b>                             |  |  |  |
| Not energy efficient - higher running costs |  |  |  |
| <b>England &amp; Wales</b>                  |  | EU Directive 2002/91/EC  |  |

| Environmental Impact (CO <sub>2</sub> ) Rating                  |  | Current                 | Potential |
|---|--|-------------------------|-----------|
| Very environmentally friendly - lower CO <sub>2</sub> emissions |  |                         |           |
| (92 plus) <b>A</b>  |  |                         |           |
| (81-91) <b>B</b>  |  |                         |           |
| (69-80) <b>C</b>  |  |                         |           |
| (55-68) <b>D</b>  |  |                         |           |
| (39-54) <b>E</b>  |  |                         |           |
| (21-38) <b>F</b>  |  |                         |           |
| (1-20) <b>G</b>   |  |                         |           |
| Not environmentally friendly - higher CO <sub>2</sub> emissions |  |                         |           |
| <b>England &amp; Wales</b>                                      |  | EU Directive 2002/91/EC |           |