



Dragmore Street, SW4

£2,150 PCM

A luxury two double bedroom, two bathroom apartment on the third floor of this purpose built block, with a private balcony and a large open plan reception room and fitted kitchen.

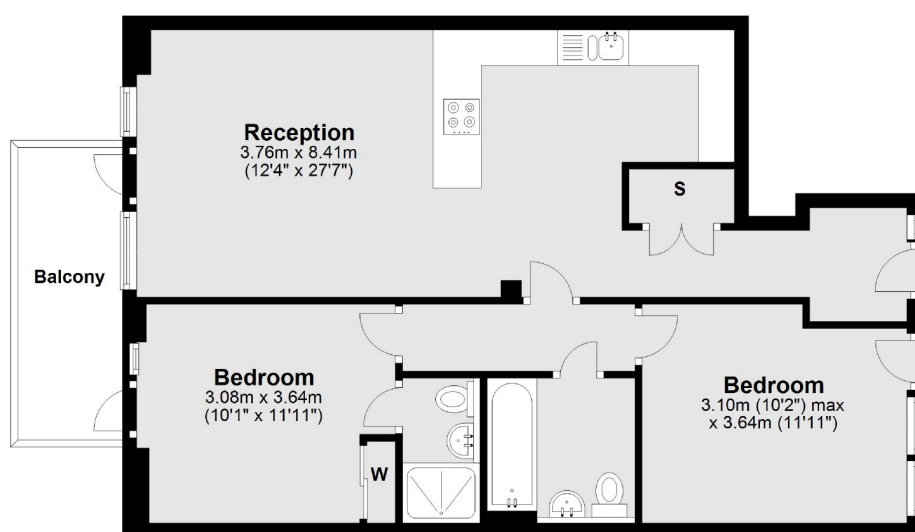
- Two Bedrooms
- Two Bathrooms
- Private Balcony
- Modern Fitted Kitchen
- Open Kitchen/Reception Room

For further information on the costs associated with renting a property, please pop into our office or visit our website.



Situated in the sought after modern development in the heart of the Clapham Park, making its convenient for Clapham South and North underground stations or alternatively Clapham Common and even Brixton.



Second Floor

Total area: approx. 68.6 sq. metres (737.9 sq. feet)

Jacksons Clapham
73 Abbeville Road
London
SW4 9JN
020 8875 7995
clapham.lettings@jacksonsestateagents.com

Energy Rating: We aim to make our particulars both accurate and reliable. However they are not guaranteed; nor do they form part of an offer or contract. If you require clarification on any points then please contact us, especially if you're traveling some distance to view. Please note that appliances and heating systems have not been tested and therefore no warranties can be given as to their good working order.