



## Kenilworth Road, W5

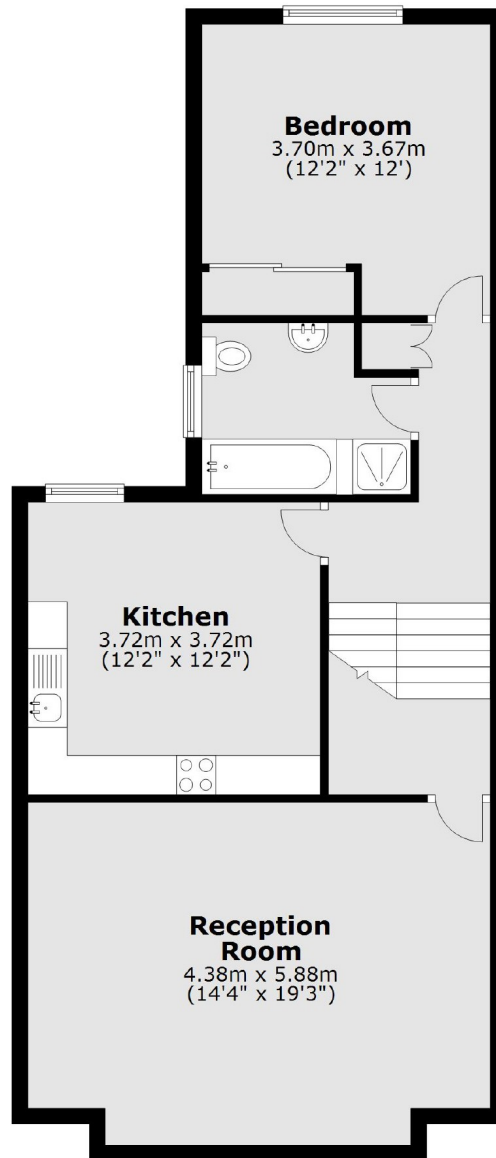
£450,000

A spacious split-level one double bedroom flat. The property has a large reception room, double bedroom with built in storage, eat-in kitchen and a stylish bathroom with separate shower. It benefits from a long lease and potential to change the layout and make a two bedroom flat, and also convert the loft (STPP).

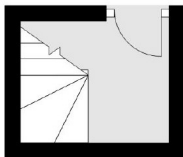
Kenilworth Road is ideal for access to Ealing Broadway station (Central and District lines, Mainline and future Crossrail), shopping centre, restaurants and bars.

- Top Floor Flat • Split Level • Eat-In Kitchen •
- Separate Living Room • 980 Year Lease • Potential To Convert The Loft (STPP) •

## Second Floor



## First Floor



Total area: approx. 72.5 sq. metres (780.3 sq. feet)

Robertson Smith & Kempson Ealing Sales  
1 The Broadway, London,  
W5 2NT  
020 8840 7677  
[ealingsales@robertsonsmithandkempson.co.uk](mailto:ealingsales@robertsonsmithandkempson.co.uk)

Energy Rating: D. We aim to make our particulars both accurate and reliable. However they are not guaranteed; nor do they form part of an offer or contract. If you require clarification on any points then please contact us, especially if you're traveling some distance to view. Please note that appliances and heating systems have not been tested and therefore no warranties can be given as to their good working order.