

# 3 Wyatt House, 59 Cambridge Road, East Twickenham, TW1 2TH



VP

Available for a long let

- 2 double bedrooms
- 2 bathrooms – one en-suite
- Living room
- Kitchen
- Parking
- Gym
- 24 hour security
- Furnished



# 3 Wyatt House, 59 Cambridge Road, East Twickenham, TW1 2TH

## SUMMARY

- En-suite Master Bedroom
- Further double bedroom
- 2 bathrooms
- Large reception room
- Kitchen with all appliances
- Gated allocated parking
- Prestigious riverside development
- On-site Gym
- 24 hour Concierge
- Short walk to Richmond town centre

£2600pcm

Furnished - exclusive of bills

## THE PROPERTY

This superb 2 double bedroom, 2 bathroom apartment is perfectly located in this highly sought after riverside development.

Incredibly private, it enjoys a 24-hour concierge, on site gyms and green spaces, and is perfect for a professional couple or a family who can take advantage of the excellent schools in the area.

## THE AREA

Richmond was recently deemed the happiest place in London to live and you can see why. With award winning restaurants, a theatre famous for its productions as well as all the beauty of Richmond Park on your doorstep in which to externalise, there is always something to perk up your day. Heathrow is 20 minutes (on a good day) and Richmond station is ideal for the City – 18 minutes into Waterloo and Tubes onwards.

For the hard-core sports fan, this is also the capital of Rugby Union, with Twickenham, (England), the Stoop (Harlequins) and the Old Deer Park (London Welsh) all close by. The river plays a major role in Richmond life too, with a large array of restaurants and bars dotted along the towpath, a saunter along here is scattered with historical gems too, there is simply so much to explore.

# TERMS

## Local Authority:

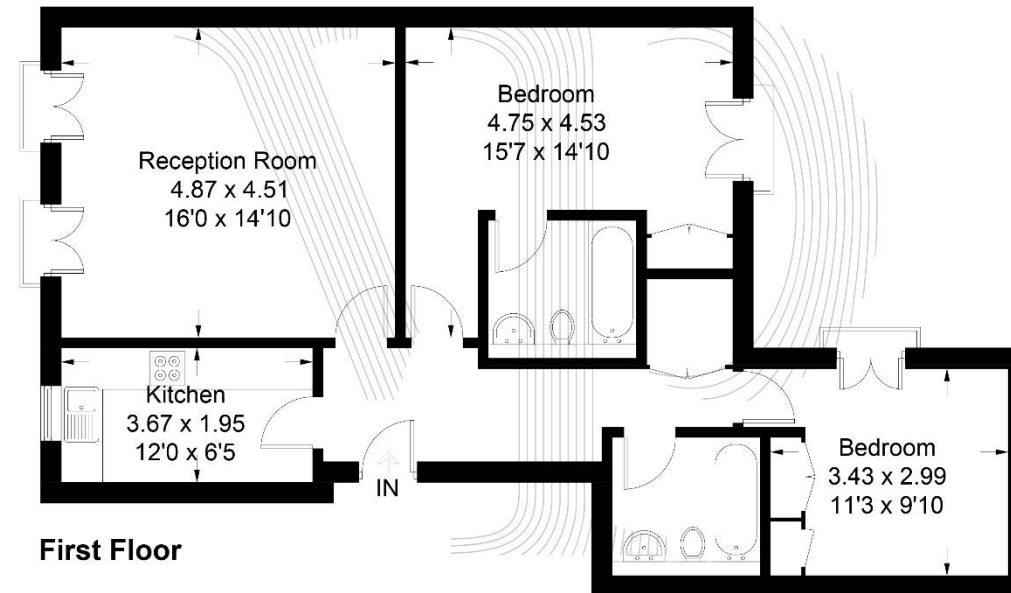
Richmond Borough Council, Civic Centre, 44 York  
Street, Twickenham, TW1 3BZ  
020 8891 1411

Council Tax – Band G £3264.43 2021/2022

# FLOORPLAN

Clevedon Road, Twickenham, TW1

Approximate Gross Internal Area = 78.2 sq m / 842 sq ft



All measurements are in accordance to the RICS Code Of Measuring Practice. Measurements are approximate & only for illustrative purposes.  
© Property Visual Ltd - info@propertyvisual.com - www.propertyvisual.com - 01580 241 428

57 Sheen Lane  
London SW14 8AB



020 8876 2222  
village-properties.co.uk







