



## Eastfields Road, W3

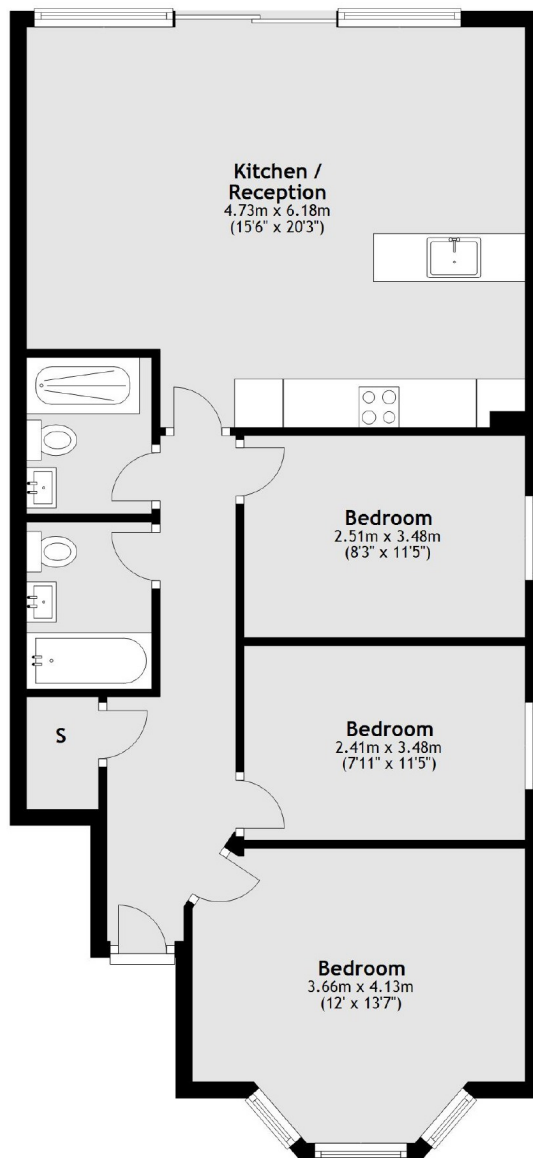
£575,000

A newly converted three bedroom garden flat in an impressive end of terrace property. The apartment has been immaculately finished throughout and is offered with no onward chain.

Eastfields Road is within 500 metres of Acton Main Line station, a future Crossrail station.

- Three Bedrooms • Two Bathrooms • Private Garden •

## Ground Floor



Total area: approx. 77.2 sq. metres (831.2 sq. feet)

Robertson Smith & Kempson Acton Sales  
137 High Street, Acton,  
London, W3 6LY  
020 8896 3996  
[actonsales@robertsonsmithandkempson.co.uk](mailto:actonsales@robertsonsmithandkempson.co.uk)

Energy Rating: C. We aim to make our particulars both accurate and reliable. However they are not guaranteed; nor do they form part of an offer or contract. If you require clarification on any points then please contact us, especially if you're traveling some distance to view. Please note that appliances and heating systems have not been tested and therefore no warranties can be given as to their good working order.