

**TO LET**



**Corrib Court, Crothall Close, Palmers Green, London, N13**  
**£1,600 Per Calendar Month**

**Anthony Webb**  
ESTATE AGENTS



# Corrib Court, Crothall Close, Palmers Green, London, N13

6 MONTH LET REQUIRED for a spacious furnished two double bedroom duplex flat set over the first and second floors of this converted former school building.

The flat is ideally located on Fox Lane for Palmers Greens shops, restaurants, bus routes and mainline station into Moorgate. Southgate underground is also short bus ride away via the W6 bus route.

Secure communal entrance with entry phone system • Spacious living room with parquet wood floor • Fitted kitchen/diner • Guest cloak room • Two double bedrooms both with en-suite bath/shower rooms • Electric heating • Secure gated parking for one vehicle.

- Two double bedrooms
- Split level flat
- Spacious living room
- Kitchen/diner
- Two bath/shower rooms
- Former school building
- Electric heating
- Gated parking space





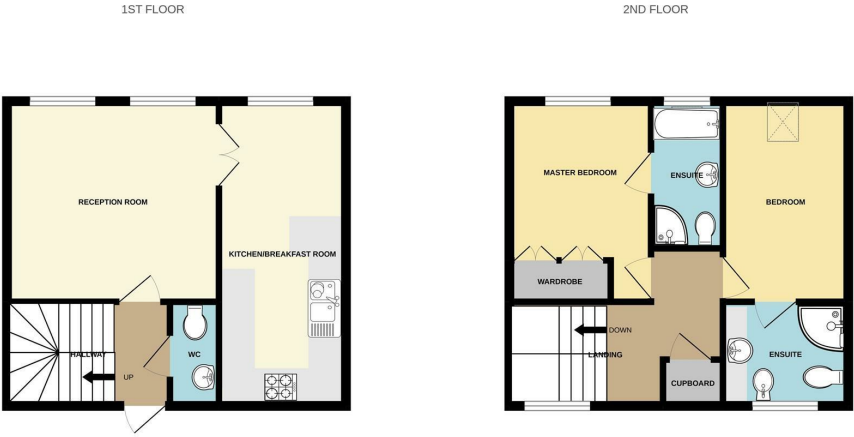


Corrib Court, Crothall Close  
Palmers Green  
London  
N13 4BG

Tenure:  
Gross Internal Area: sq ft



Energy Efficiency Rating		
	Current	Potential
Very energy efficient - lower running costs		
(92 plus) A		
(81-91) B		
(69-80) C		
(55-68) D		
(39-54) E		
(21-38) F		
(1-20) G		
Not energy efficient - higher running costs		
England & Wales EU Directive 2002/91/EC		
Environmental Impact (CO <sub>2</sub> ) Rating		
	Current	Potential
Very environmentally friendly - lower CO <sub>2</sub> emissions		
(92 plus) A		
(81-91) B		
(69-80) C		
(55-68) D		
(39-54) E		
(21-38) F		
(1-20) G		
Not environmentally friendly - higher CO <sub>2</sub> emissions		
England & Wales EU Directive 2002/91/EC		



Property particulars as supplied by Anthony Webb Estate Agents are set out as a general outline in accordance with the Property Misdescriptions Act (1991) only for the guidance of intending purchasers of lessees, and do not constitute any part of an offer or contract. Details are given without any responsibility, and any intending purchasers, lessees or third parties should not rely on them as inspection or otherwise as to the correctness of each of them. We have not carried out a structural survey and the services, appliances and specific fittings have not been tested. All photographs, measurements, floor plans and distances referred to are given as a guide only and should not be relied upon for the purchase of carpets or any other fixtures statements or representations of fact, but must satisfy themselves by or of fittings, gardens, roof terraces, balconies and communal gardens as well as tenure and lease details cannot have their accuracy guaranteed for intending purchasers. Lease details, service ground rent (where applicable) are given as a guide only and should be checked and confirmed by your solicitor prior to exchange of contracts. no person in the employment of Anthony Webb has any authority to make any representation or warranty whatever in relation to this property.

348 Green Lanes, Palms Green, London N13 5TJ  
020 8882 7888  
palmersgreen@anthonywebb.co.uk  
anthonywebb.co.uk

