

# TATES

020 7602 6020



## More Close, St Pauls Court W14 9BN

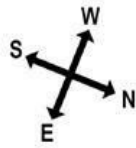
**£2,500 Per month**

- 3 bedrooms
- Private garden
- Communal Heating & Hot Water inclusive
- Close to Barons Court tube
- Furnished
- Available mid February
- Gated development
- Energy Efficiency Rating Band: C

# More Close, W14

Approximate gross internal area

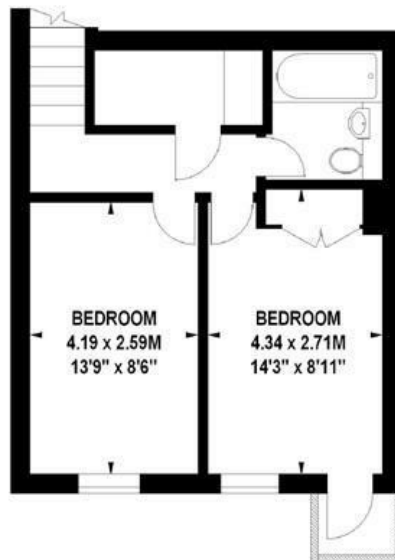
89 sq m / 958 sq ft



First Floor



Ground Floor



Second Floor

Illustration for identification purposes only, not to scale  
All measurements are maximum, and includes wardrobes and window bays where applicable  
Prepared by Mays Floorplans © . Tel 079509 35588

Whilst these particulars are produced in good faith and are believed to be correct, no guarantee is given, nor any responsibility accepted, by Tates nor by any of its representatives, for their accuracy. The particulars do not constitute part of any offer or contract, and it is recommended that such things as measurements, condition, structure, services, appliances, fixtures and fittings and facilities are all independently assessed by the prospective purchaser or renter of the subject property prior to committing to any contract.

Energy Efficiency Rating		
	Current	Potential
Very energy efficient - lower running costs		
(92 plus) <b>A</b>		
(81-91) <b>B</b>		
(69-80) <b>C</b>	71	73
(55-68) <b>D</b>		
(39-54) <b>E</b>		
(21-38) <b>F</b>		
(1-20) <b>G</b>		
Not energy efficient - higher running costs		
England & Wales		
EU Directive 2002/91/EC		

135 Hammersmith Road, West Kensington, London W14 0QL

mail@tatesestates.co.uk

tatesestates.co.uk

Tates (Agents) Ltd. Registered in England and Wales No. 02356337  
Registered Office: Imperial House, 8 Keane Street, London WC2B 4AS

