



Brookbank Avenue, W7

£750,000

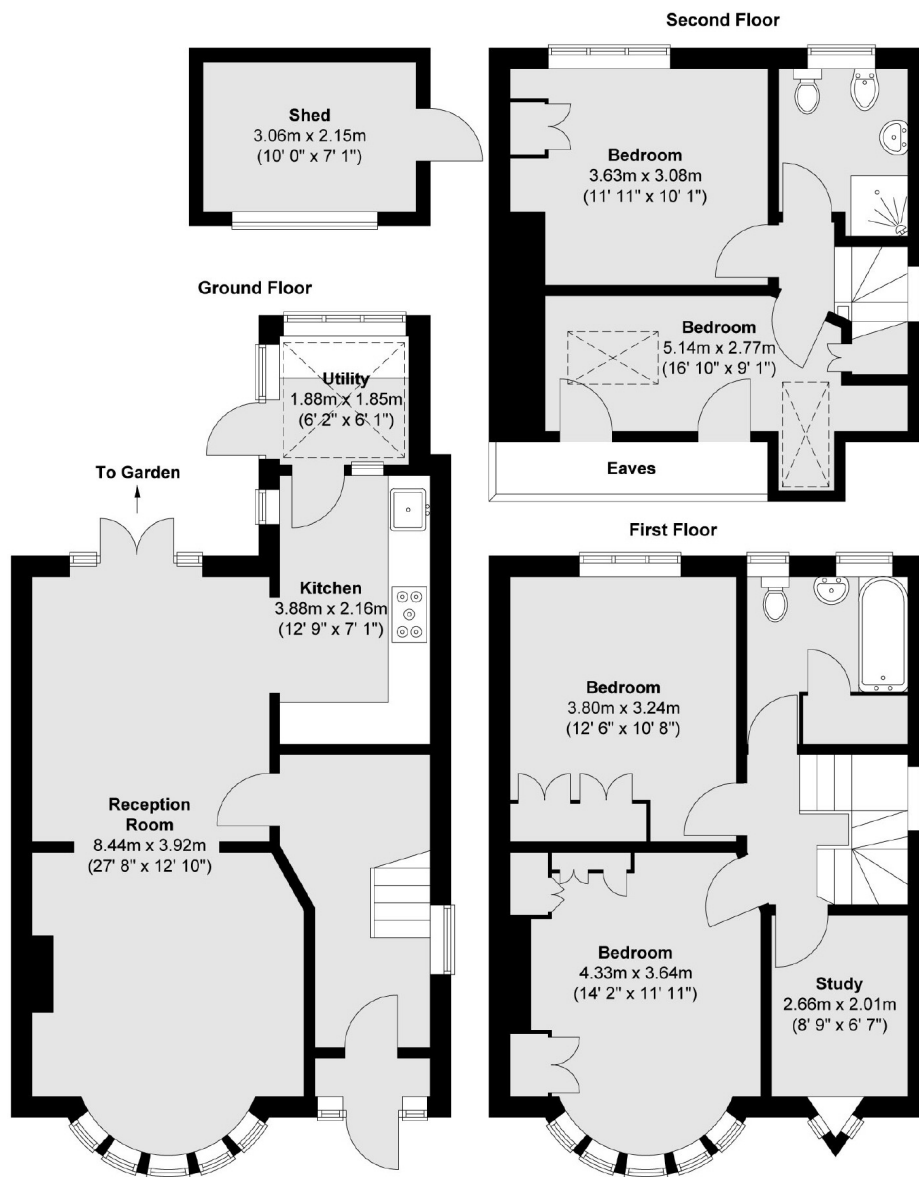
This immaculately presented five bedroom, two bathroom family home is being offered to the market chain free. With the added benefit of off-street parking and desirable aspect overlooking Drayton Manor Playing Fields.



Located on a tree lined sought after residential road off Greenford Avenue, with varied bus routes to Ealing/Northfields/Acton and Greenford. Approximately one mile from Hanwell mainline station (Crossrail). Well regarded schools include Mayfield primary and Brentside high school within walking distance.

- Five Bedrooms • Two Bathrooms • Off-Street Parking •
 - Potential To Extend (STPP) • Chain Free • Good Transport Links •
-





Total area (approx.) : 125.7 sq. m (1353 sq. ft)

Total shed area (approx.) : 6.5 sq. m (70 sq. ft)

Robertson Smith & Kempson Hanwell Sales
69 Greenford Avenue,
London, W7 1LL
020 8566 2339
hanwellsales@robertsonsmithandkempson.co.uk

Energy Rating: C. We aim to make our particulars both accurate and reliable. However they are not guaranteed; nor do they form part of an offer or contract. If you require clarification on any points then please contact us, especially if you're traveling some distance to view. Please note that appliances and heating systems have not been tested and therefore no warranties can be given as to their good working order.