

Chard

— Lettings —



Queen's Club Gardens, W14

£507 pw (£2,197 pcm)

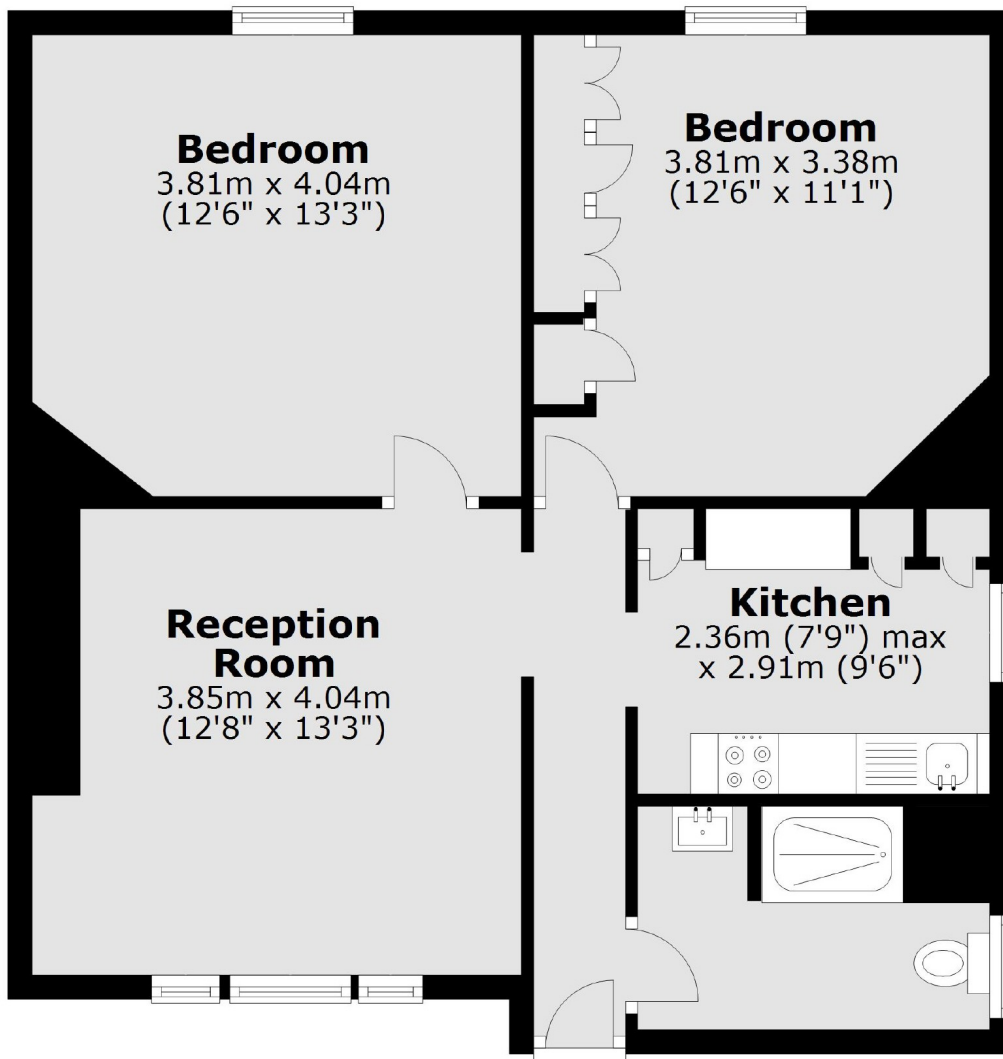
This two double bedroom, top floor flat is located in the prestigious Queen's Club Gardens mansions. The property has a spacious reception room, a separate kitchen, modern bathroom and access to well-maintained communal grounds and tennis courts.

Queens Club Gardens is well located to both West Kensington and Barons Court tube stations (District & Piccadilly lines). North End Road and Fulham Broadway are close by with a selection of local amenities. There are many good bus routes close by leading into the city.

- Two Bedrooms • Spacious Reception • Separate Kitchen •
- Modern Bathroom • Residents Grounds • Residents Tennis Courts •

Chard

— Lettings —



Third Floor

Total area: approx. 61.6 sq. metres (662.8 sq. feet)

Chard Fulham
5 Harwood Road,
London, SW6 4QP
020 7384 1400
fulhamlettings@chard.co.uk

Energy Rating: . We aim to make our particulars both accurate and reliable. However they are not guaranteed; nor do they form part of an offer or contract. If you require clarification on any points then please contact us, especially if you're traveling some distance to view. Please note that appliances and heating systems have not been tested and therefore no warranties can be given as to their good working order.