



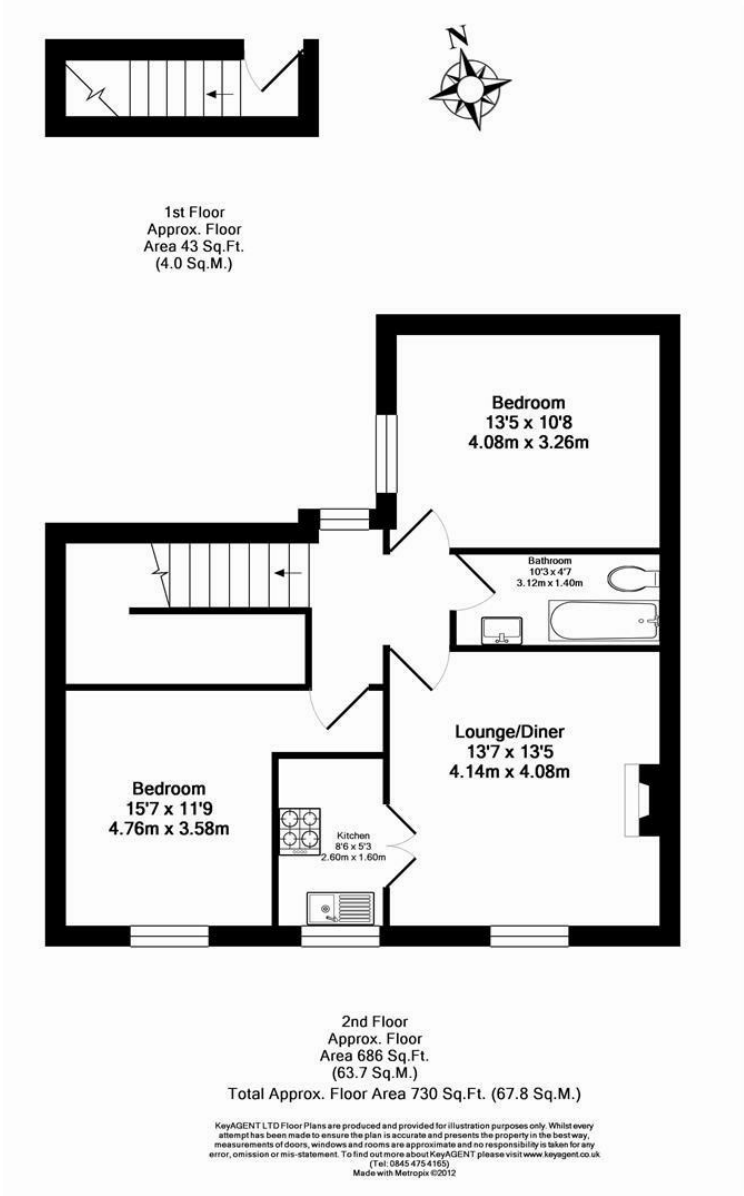
£427 Per Week

- Two bedroom conversion flat • Top floor • Popular residential road • Split-level • On street residents permit parking available on application • Leasehold covenants may apply

Lambert Road | London, SW2



A beautifully presented split-level two double bedroom flat in this substantial double fronted period property on a popular residential road off Brixton Hill. The flat features a South facing living room opening onto a small but modern kitchen. There are 2 double bedrooms, both with built-in storage and a three piece bathroom suite. Ideally located, the flat is moments from Sainsbury's Local and Brixton Hill parade with its fantastic selection of bars & eateries (such as The Fish Lounge, Curry Paradise, the White Horse Pub, Pizza Brixton, Stir Coffee & Cafe on the Hill). Brixton town centre, which is home to Brixton Village, Ritzy Cinema, Brixton Academy and Pop Brixton as well as many more bars and shops is within 10 minutes' walk. Transport links include Brixton tube station, mainline station and numerous buses to the City and West End. Available from mid March as part furnished.



Energy Efficiency Rating		
	Current	Potential
Very energy efficient - lower running costs		
(92 plus) A		
(81-91) B		
(69-80) C		
(55-68) D	55	62
(39-54) E		
(21-38) F		
(1-20) G		
Not energy efficient - higher running costs		
England & Wales		
EU Directive 2002/91/EC		
Environmental Impact (CO ₂) Rating		
	Current	Potential
Very environmentally friendly - lower CO ₂ emissions		
(92 plus) A		
(81-91) B		
(69-80) C		
(55-68) D		
(39-54) E		
(21-38) F		
(1-20) G		
Not environmentally friendly - higher CO ₂ emissions		
England & Wales		
EU Directive 2002/91/EC		

These particulars are designed to provide a guideline only and cannot be relied upon as a statement of fact. The description represents the opinion of the author and is not intended to provide false or misleading information. Any prospective purchaser should make further checks on its accuracy. All measurements are approximate and floorplans are for representation only.



Eden Harper
3 Arlington Parade, Brixton Hill, Brixton, SW2 1RH
0207 274 3111
brixsales@edenharper.com
www.edenharper.com