

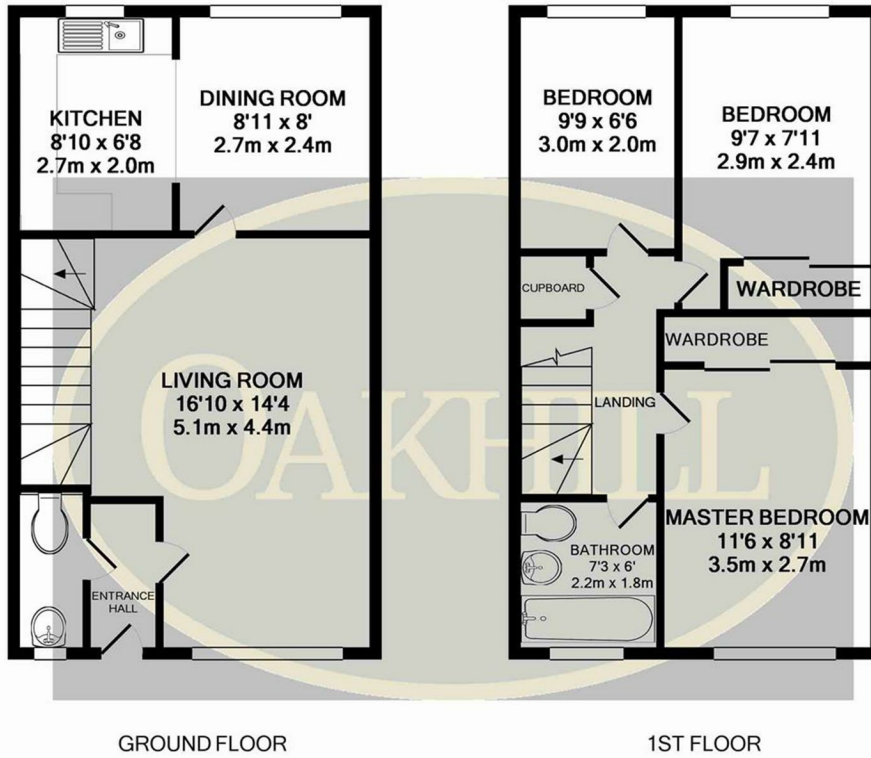


Bankside Close, Isleworth, Middlesex TW7 7EW

Three bedroom family home situated in a quiet cul-de-sac, offering a lovely rear garden, spacious reception room, downstairs W/C, upstairs family bathroom, three good sized bedrooms and off street parking.

Bankside Close is set just off Twickenham Road and provides easy access to the local schools in Isleworth, and Twickenham town centre.

£1,695 PER MONTH



GROUND FLOOR

1ST FLOOR

Whilst every attempt has been made to ensure the accuracy of the floor plan contained here, measurements of doors, windows, rooms and any other items are approximate and no responsibility is taken for any error, omission, or mis-statement. This plan is for illustrative purposes only and should be used as such by any prospective purchaser. The services, systems and appliances shown have not been tested and no guarantee as to their operability or efficiency can be given
 Made with Metropix ©2016

Energy Efficiency Rating	
	Potential
Very energy efficient - lower running costs	
(92 plus) A	89
(81-91) B	
(69-80) C	
(55-68) D	
(39-54) E	
(21-38) F	
(1-20) G	
Not energy efficient - higher running costs	
England & Wales	EU Directive 2002/91/EC

Environmental Impact (CO ₂) Rating	
	Potential
Very environmentally friendly - lower CO ₂ emissions	
(92 plus) A	90
(81-91) B	
(69-80) C	
(55-68) D	
(39-54) E	
(21-38) F	
(1-20) G	
Not environmentally friendly - higher CO ₂ emissions	
England & Wales	EU Directive 2002/91/EC



6 South Street, Isleworth, TW7 7BG
 Tel: 0208 568 4433
 info@oakhillagents.co.uk
 www.oakhillagents.co.uk

OAKHILL