

TATES

020 7602 6020



Barton Road, London W14 9HB

£500,000

- Two Double Bedrooms
- Open Plan Living Room
- Excellent Order
- Queens Club Tennis close by
- Barons Court & West Kensington tube
- Top Floor
- Period Building
- Long Lease
- Energy Efficiency Rating Current Band: C

Barton Road, W14

Approximate gross internal area

578 sq ft / 53.70 sq m
(Including Attic)

Attic
36 sq ft / 3.34 sq m

Key :
CH - Ceiling Height

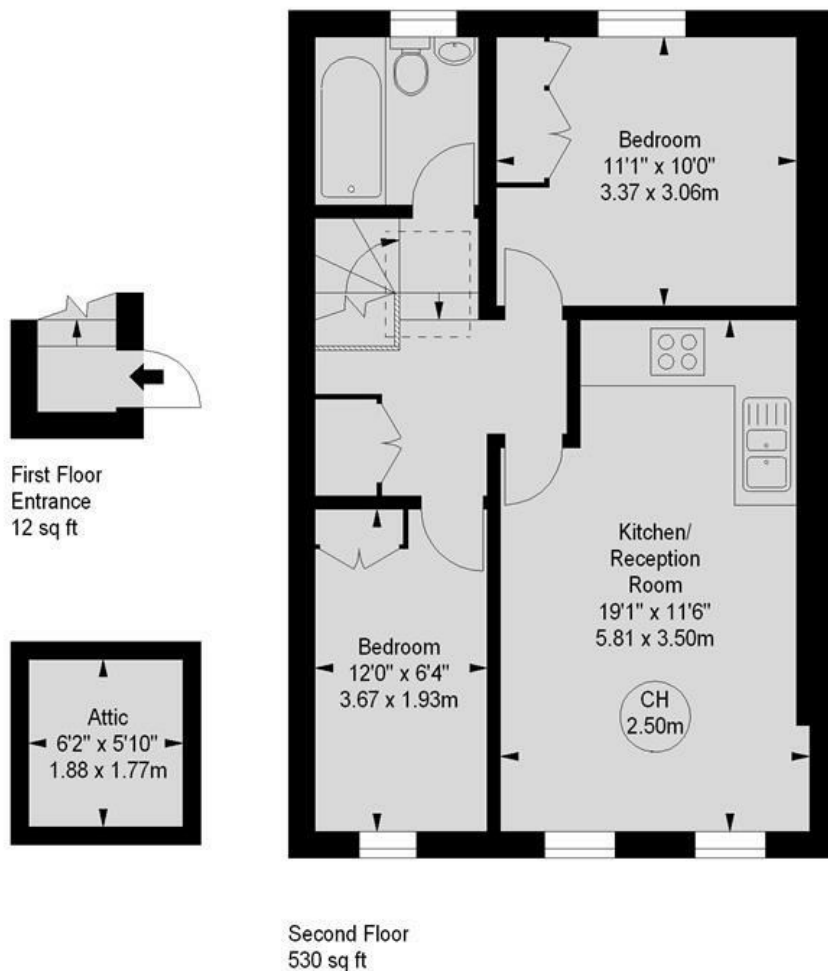
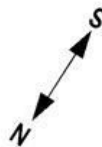


Illustration For Identification Purposes Only. Not To Scale
*Floorplan Drawn According To RICS Guidelines

Whilst these particulars are produced in good faith and are believed to be correct, no guarantee is given, nor any responsibility accepted, by Tates nor by any of its representatives, for their accuracy. The particulars do not constitute part of any offer or contract, and it is recommended that such things as measurements, condition, structure, services, appliances, fixtures and fittings and facilities are all independently assessed by the prospective purchaser or renter of the subject property prior to committing to any contract.

Energy Efficiency Rating		
	Current	Potential
Very energy efficient - lower running costs		
(92 plus) A		
(81-91) B		
(69-80) C		
(55-68) D		
(39-54) E		
(21-38) F		
(1-20) G		
Not energy efficient - higher running costs		
	75	83
England & Wales		
EU Directive 2002/91/EC		

135 Hammersmith Road, West Kensington, London W14 0QL

mail@tatesestates.co.uk

tatesestates.co.uk

Tates (Agents) Ltd. Registered in England and Wales No. 02356337
Registered Office: Imperial House, 8 Keane Street, London WC2B 4AS

