

Shaw & Co  
ESTATE AGENTS



## Poynder Lodge, London Road, Isleworth, TW7 5AJ

£349,950

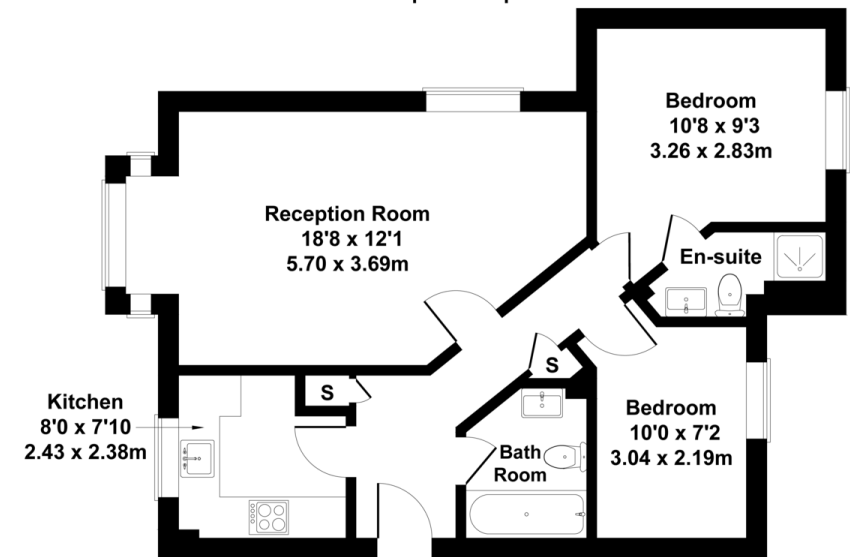
In immaculate condition comes this two bedroom first floor flat, available on this convenient location and benefitting from a lease in excess of 900 years. Set within this gated development the property has a stunning lounge, a separate newly decorated kitchen, a three piece bathroom suite as well as an en suite shower room. There is also allocated parking as well as visitors parking bays. Ideal for a first time buyer the flat is walking distance to nearby shops, bus stops and a short distance to Syon Lane station. Viewings are highly recommended, please contact us for further information.





## Poynder Lodge

Approximate Gross Internal Area  
657 sq ft - 61 sq m



### FIRST FLOOR

Not to Scale. Produced by The Plan Portal 2022  
For Illustrative Purposes Only.

%epcGraph\_c\_1\_334%

10 Central Parade, New Heston  
Road, Heston, Middlesex, TW5  
0LH

[www.shawandcoestates.com](http://www.shawandcoestates.com)  
020 8570 7258  
[heston@shawandcoestates.com](mailto:heston@shawandcoestates.com)

Agents Note: Whilst every care has been taken to prepare these particulars, they are for guidance purposes only. All measurements are approximate are for general guidance purposes only and whilst every care has been taken to ensure their accuracy, they should not be relied upon and potential buyers/tenants are advised to recheck the measurements