

# SNELLERS

ESTATE AGENTS



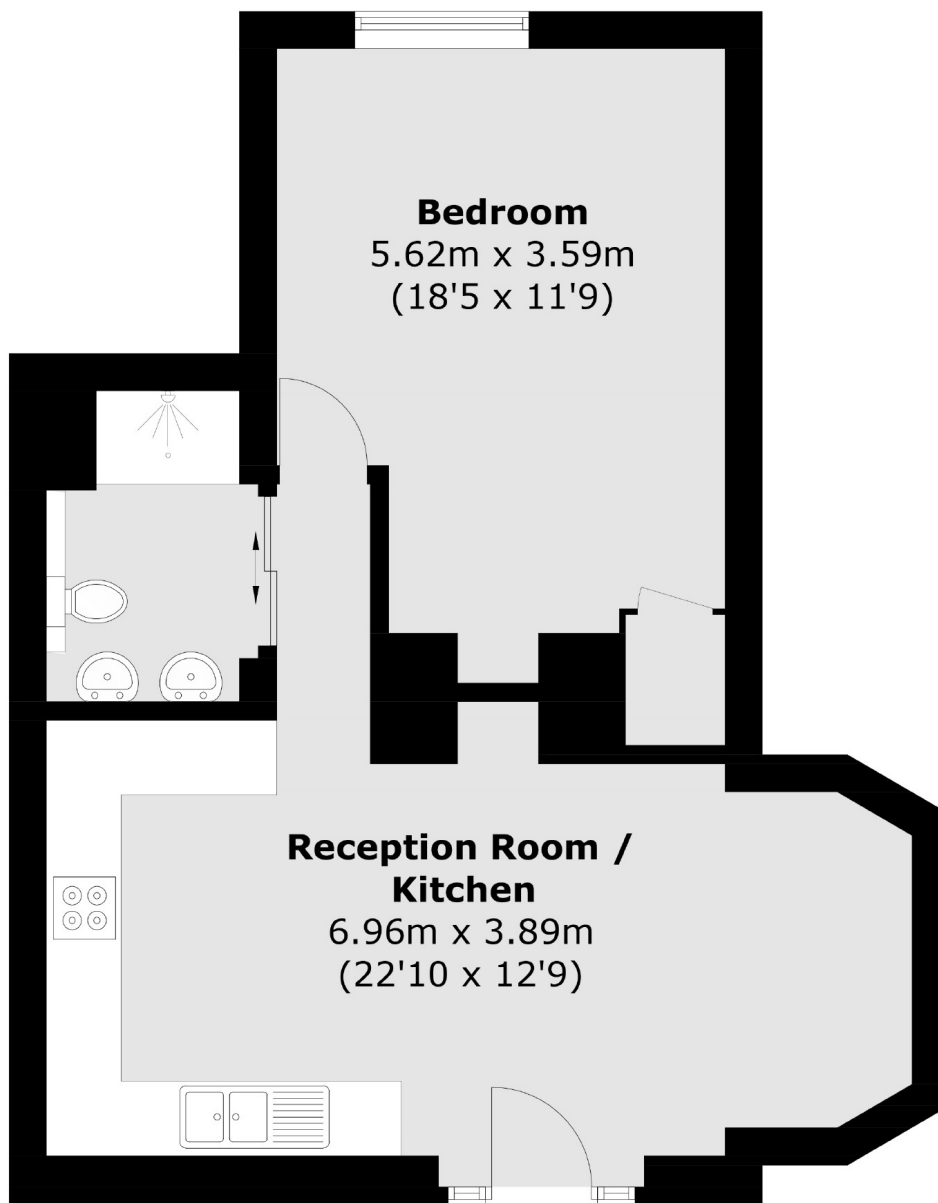
## Cambridge Road, KT1

£314,990

A fantastic one bedroom period conversion flat forming part of a handsome double fronted building situated in a highly convenient location. This apartment offers over 520 sq ft of immaculately presented living space and also has the advantage of a share in the freehold.

This apartment is ideally located approximately half a mile from both Kingston and Norbiton train stations. There are local shops and bus routes on your doorstep, and Kingston town centre, with the river and parks are also close by.

- Large Reception Room • Superb Kitchen • Double Bedroom •
- Shared Freehold • Own Front Door • Fantastic Location •



Total area (approx.): 47.7 sq. m (513.4 sq. ft)

Snellers Kingston Sales  
17-21 Richmond Road  
Kingston  
KT2 5BW  
020 8546 8715  
kingstonsales@snellers.co.uk

Energy Rating: D We aim to make our particulars both accurate and reliable. However they are not guaranteed; nor do they form part of an offer or contract. If you require clarification on any points then please contact us, especially if you're traveling some distance to view. Please note that appliances and heating systems have not been tested and therefore no warranties can be given as to their good working order