



## Longstaff Road, SW18

£1,100,000

A four bedroom terraced house with a large private garden within close proximity to King George's Park.

- Sought After Location
- 100ft rear garden
- Four Bedrooms
- Excellent Condition
- Open Plan Kitchen/Living Room
- Two Bathrooms





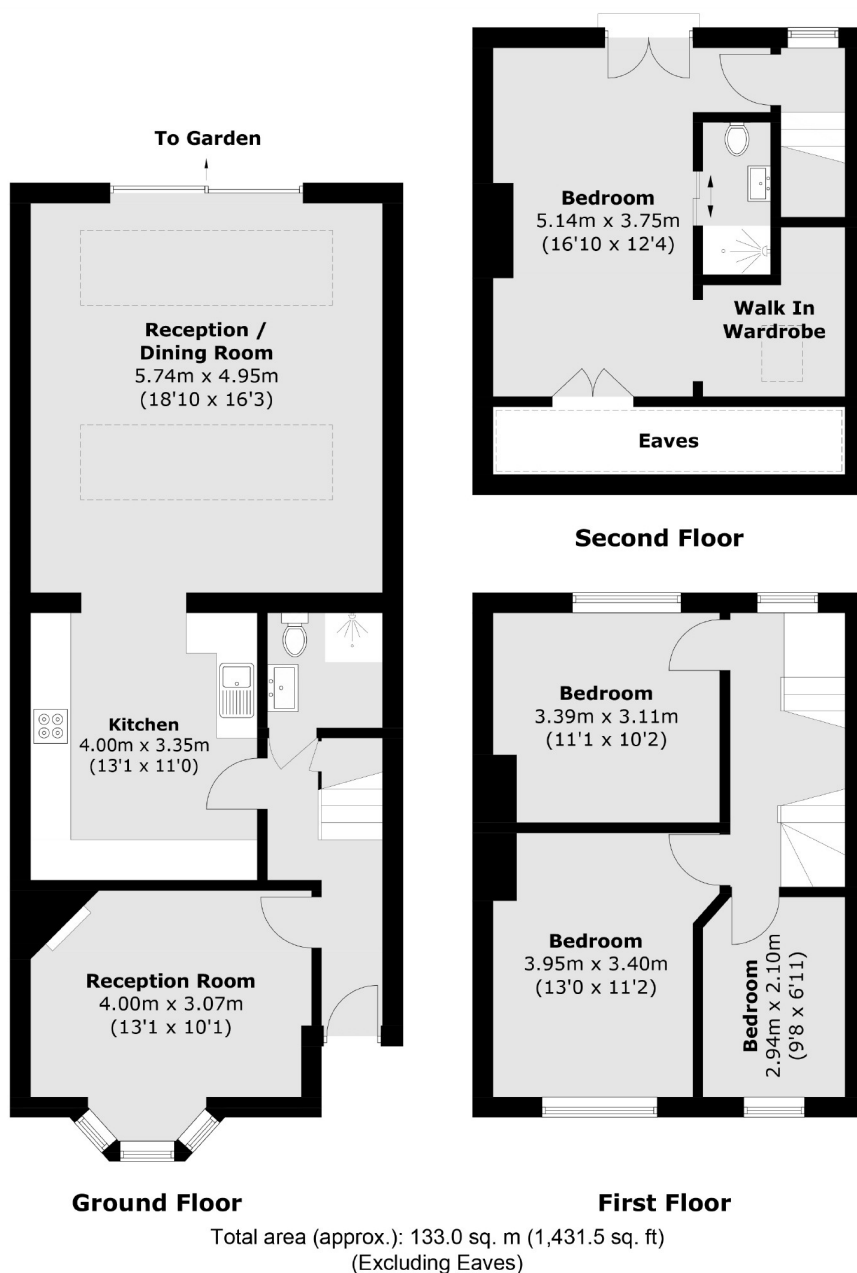
The property offers a high level of finish throughout and has been tastefully extended. The accommodation is laid out over three floors, a spacious hallway with a downstairs bathroom leads to a formal front living room. To the rear of the property there is a stylist extended kitchen, designed by an architect, flowing through to a six meter rear extension with frameless sliding doors and styling sloped skylights illuminate the room. The property boasts a large private garden overlooking King George's Park. On the first floor there are two spacious double bedrooms and a single bedroom. The property has been extended into the loft giving a master bedroom with en-suite and walk in wardrobe.

The sought after Longstaff Road is situation just a short walk to King George's Park and conveniently located for Southfield and East Putney underground station. Central Wandsworth with it array of shops and local amenities is within close proximity, along with Wandsworth Town over ground station.









Jacksons Earlsfield  
372-374 Garratt Lane  
Earlsfield  
London  
SW18 4ES  
020 8971 7979

Energy Rating: C We aim to make our particulars both accurate and reliable. However they are not guaranteed; nor do they form part of an offer or contract. If you require clarification on any points then please contact us, especially if you're traveling some distance to view. Please note that appliances and heating systems have not been tested and therefore no warranties can be given as to their good working order.