



50 Gatesbridge Park

Finningley, Doncaster, DN9 3NY

Asking Price £440,000

Located within a superbly popular residential development and occupying an enviable cul de sac position is this immaculately presented and extended six bedroom detached home with double garage and open aspect views to the rear. The property in brief comprises; entrance hallway, cloaks/wc, modern fitted kitchen/breakfast room, utility room, sitting room/office, lounge, dining room, conservatory, master bedroom with dressing room and ensuite, five further good sized bedrooms and family bathroom. Outside; block paved driveway providing ample off road parking, double garage (converted to gym) and rear enclosed garden which is predominantly laid to lawn with patio area, fencing to boundaries and rolling views over fields to the rear. Early viewing is highly recommended to appreciate the size and condition of this fantastic family home.

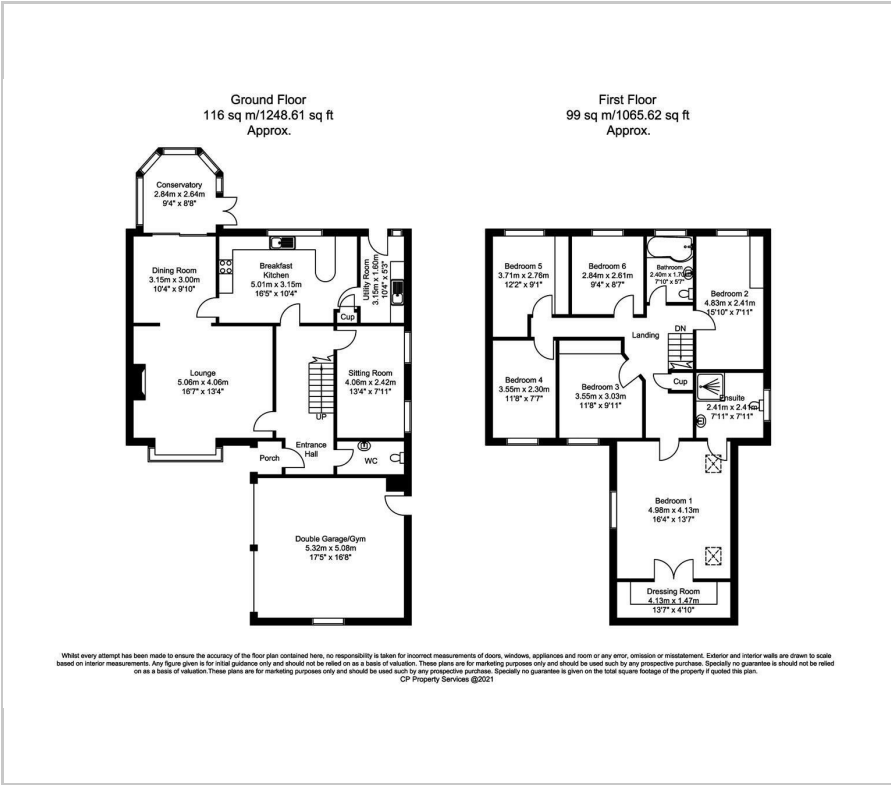
- Detached house
- Six bedrooms
- Four reception rooms
- Utility room and downstairs wc
- Master bedroom with dressing area and en suite
- Double garage (converted to gym)
- Ample off road parking
- Cul de sac position
- Open aspect views to rear
- Must be viewed

Viewing

Please contact our Office on 01302 751616 if you wish to arrange a viewing appointment for this property or require further information.



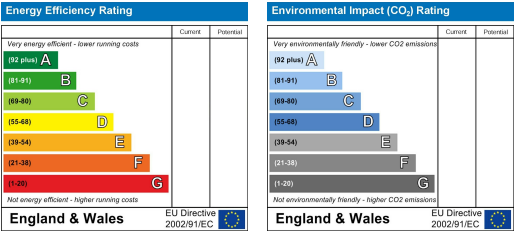
Floor Plan



Area Map



Energy Efficiency Graph



These particulars, whilst believed to be accurate are set out as a general outline only for guidance and do not constitute any part of an offer or contract. Intending purchasers should not rely on them as statements of representation of fact, but must satisfy themselves by inspection or otherwise as to their accuracy. No person in this firms employment has the authority to make or give any representation or warranty in respect of the property.