



PHILLIPS & STILL

SCHOOL ROAD, HOVE  
ASKING PRICE OF £275,000





Phillips & Still are delighted to offer to market this one bedroom apartment in this exclusive new development situated in West Hove. Ideally situated in this superb Hove location with a choice of mainline stations nearby, offering travel to London from Brighton in just over an hour with a train every 15 minutes, the extensive shopping parade offering boutique shops, arts and crafts, a vibrant cafe culture and of course the award winning restaurants; not to mention a short walk to the beach where you'll find the famous Palace Pier, Rockwater, British Airways i360 and Hove lawns.

The apartment itself benefits from open plan kitchen living, spacious bedroom, bathroom, a lift service and integrated appliances. Contact us today to secure your dream home.

#### ENTRANCE HALL

#### KITCHEN/LIVING AREA

20' 8" x 10' 9" (6.3m x 3.28m) High gloss white fitted kitchen with integrated appliances including fridge freezer, dishwasher, oven, hob and extractor. Also benefitting from quartz worktops.

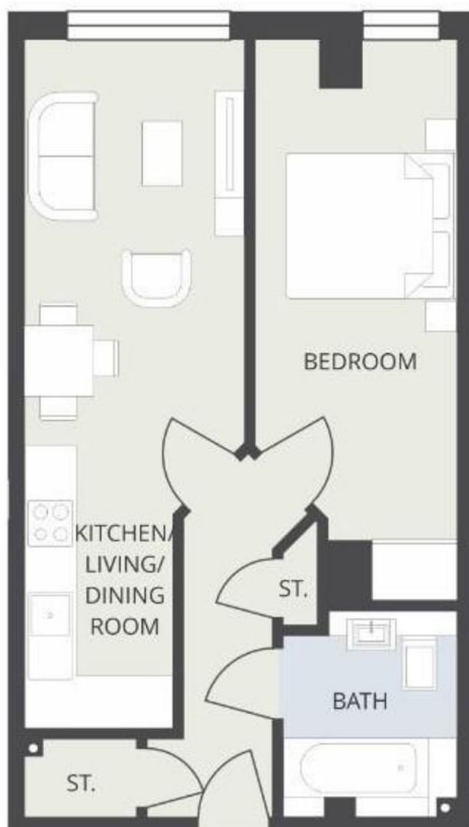
#### BEDROOM

16' 0" x 8' 6" (4.88m x 2.59m)

#### SHOWER ROOM

Fully tiled bathroom suite with wash hand basin vanity, WC, mirrored wall and fitted shower.

#### ALLOCATED PARKING



%epcGraph\_c\_1\_304%

Agents Note: Whilst every care has been taken to prepare these sales particulars, they are for guidance purposes only. All measurements are approximate and for general guidance purposes only and whilst every care has been taken to ensure their accuracy, they should not be relied upon and potential buyers are advised to recheck the measurements.

