



Flamstead Way Chesham Road, Ashley Green Chesham HP5 3PH





This charming property offers spacious and bright accommodation throughout. On the ground floor the accommodation includes two principle reception rooms, fitted kitchen and WC. Of particular note is the lounge with double aspect windows flooding the room with natural light, and also benefits from wood burner stove creating a cosy ambiance. The kitchen is equally bright and offers ample storage with a variety of fitted cupboards and also boasting a walk-in larder. To the first floor, there are three double bedrooms and a family bathroom. Bedrooms one and two both have built in wardrobes, whilst bedroom one enjoys breath taking views.

One of the feature areas of this wonderful family home is undoubtedly the rear garden, with luscious green lawn and well stocked herbaceous borders. The front garden is mainly laid to lawn with a number of mature shrubs, there is ample parking on the driveway leading to a detached garage.

#### NOTE:

THERE IS AN AGRICULTURAL TIE TO THE PROPERTY, PLEASE FEEL FREE TO ASK A TEAM MEMBER FOR MORE INFORMATION.







**welcome to**

**Flamstead Way Chesham Road,  
Ashley Green Chesham**

- VILLAGE LOCATION
- THREE DOUBLE BEDROOMS
- TWO RECEPTION ROOMS
- STUNNING GARDENS
- GARAGE & DRIVEWAY

Tenure: Freehold EPC Rating: D

Price

**£650,000**

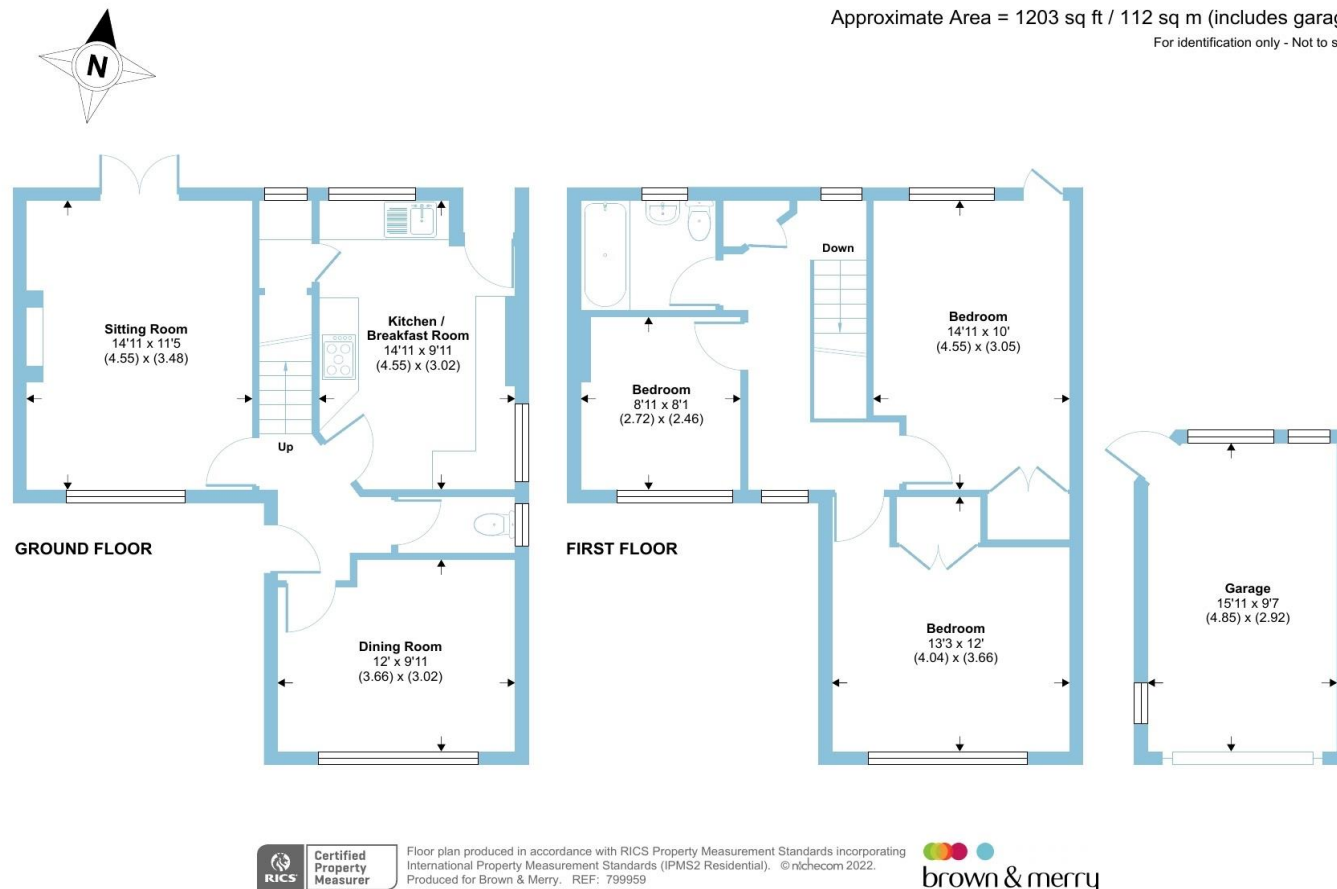


A beautifully presented three double bedroom semi-detached family home situated in a desirable Buckinghamshire village location of Ashley Green.

**Chesham Road, Ashley Green, Chesham, HP5**

Approximate Area = 1203 sq ft / 112 sq m (includes garage)

For identification only - Not to scale



**check out more properties at** [browbandmerry.co.uk](https://www.browbandmerry.co.uk)

**see all our properties on** [zoopla.co.uk](https://www.zoopla.co.uk) | [rightmove.co.uk](https://www.rightmove.co.uk) | [sequencehome.co.uk](https://www.sequencehome.co.uk)



Property Reference:  
BKH102072 - 001

1. MONEY LAUNDERING REGULATIONS Intending purchasers will be asked to produce identification documentation at a later stage and we would ask for your co-operation in order that there is no delay in agreeing the sale. 2. These particulars do not constitute part or all of an offer or contract. 3. The measurements indicated are supplied for guidance only and as such must be considered incorrect. Potential buyers are advised to recheck measurements before committing to any expense. 4. We have not tested any apparatus, equipment, fixtures or services and it is in the buyers interest to check the working condition of any appliances. 5. Where an EPC, or a Home Report (Scotland only) is held for this property, it is available for inspection at the branch by appointment. If you require a printed version of a Home Report, you will need to pay a reasonable production charge reflecting printing and other costs. 6. We are not able to offer an opinion either written or verbal on the content of these reports and this must be obtained from your legal representative. 7. Whilst we take care in preparing these reports, a buyer should ensure that his/her legal representative confirms as soon as possible all matters relating to title including the extent and boundaries of the property and other important matters before exchange of contracts.



**01442 870444**



[berkhamsted@browbandmerry.co.uk](mailto:berkhamsted@browbandmerry.co.uk)



124 High Street, BERKHAMSTED,  
Hertfordshire, HP4 3AT



[browbandmerry.co.uk](https://www.browbandmerry.co.uk)