



## Victorian Heights, SW8

£2,950 PCM

This luxurious and peaceful apartment is presented to the market in immaculate condition throughout and provides two large double bedrooms, both with stylish en-suite bathrooms plus an additional bright

- Two Double Bedrooms
- Three Bathrooms
- Spacious Reception Room
- Mezzanine Office Space
- High Ceilings
- Secure Gated Development
- Communal Garden
- Furnished/Unfurnished

For further information on the costs associated with renting a property, please pop into our office or visit our website.





The kitchen has integrated appliances and granite worktops and opens onto a spacious dining area.

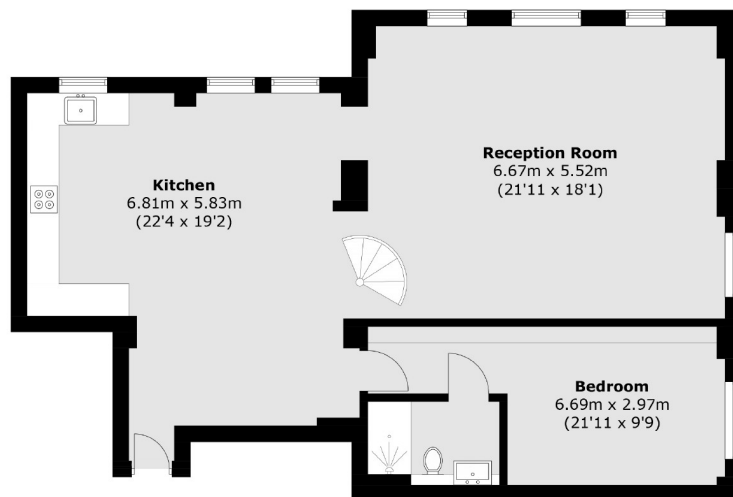
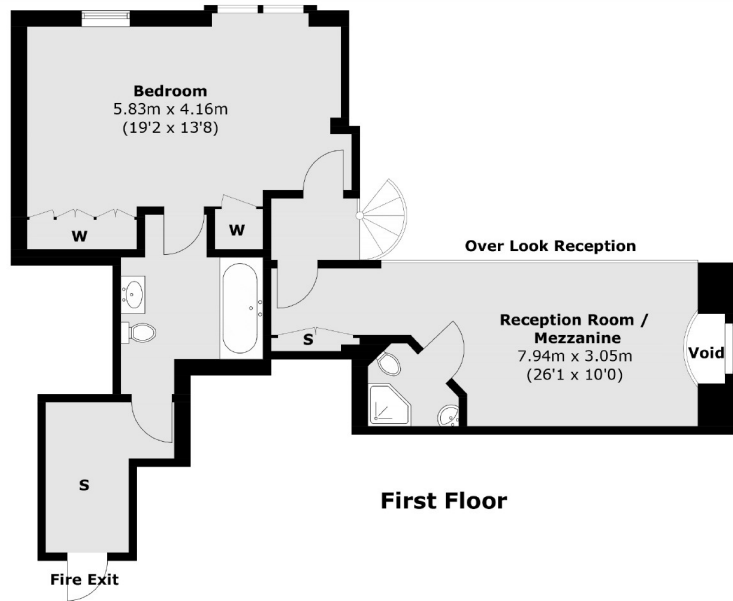
One of the many attractive points of the property is the magnificent double-height ceilings in the living area and large windows that offer far reaching and spectacular views across the London skyline.

A spiral central staircase connects both floors and leads up to the mezzanine space which can be used as a study/and or spare bedroom as well as access to the spacious master bedroom which also has an en suite bathroom.

The property also benefits from a large bedroom complete with an en suite bedroom.

Victorian Heights is a converted school finished to the highest of standards which sits peacefully in the popular diamond conservation area, equidistant between the wide open spaces of both Battersea Park and Clapham Common. Local transport links include Queenstown Road Overground Station (7 minutes' walk and direct to Waterloo) and Wandsworth Road Overground Station (10 minutes' walk and part of the London Overground orbital train network). Clapham Common Underground





Total area (approx.): 152.7 sq. m (1,643.6 sq. ft)  
(Excluding Void / Including Mezzanine)

Jacksons Clapham  
73 Abbeville Road  
London  
SW4 9JN  
020 8875 7995  
[clapham.lettings@jacksonsestateagents.com](mailto:clapham.lettings@jacksonsestateagents.com)

Energy Rating: We aim to make our particulars both accurate and reliable. However they are not guaranteed; nor do they form part of an offer or contract. If you require clarification on any points then please contact us, especially if you're traveling some distance to view. Please note that appliances and heating systems have not been tested and therefore no warranties can be given as to their good working order.