



Caversham Avenue, Palmers Green, London, N13
£925,000 Freehold

Anthony Webb
ESTATE AGENTS

Caversham Avenue, Palmers Green, London, N13

Beautifully presented four bedroom Edwardian end of terrace house which has been extended and improved by the current vendors to provide a spacious family home with many period features.

Caversham Avenue is a quiet residential turning running between Fox Lane and Bourne Hill and is conveniently located for Palmers Green's shops, restaurants, bus routes and mainline station 30 mins into Moorgate. Southgate underground and bus station is a short ride away via the W9 bus route. Both Broomfield and Grovelands park are also within easy walking distance.

Porch • Original front door and tessellated tiled floor to hallway • Spacious living room with original wood floor, ceiling features and feature fireplace • Sitting room with tiled floor, under floor heating and French doors to garden • Modern fitted kitchen/diner with tiled floor, under floor heating and granite work surfaces with inset ceramic butler sink • Utility room with sink and storage units • Ground floor modern shower room • Spacious first floor landing with access to loft space which has great potential to convert • Modern family bathroom • Double glazing • Gas central heating with nest wireless controls • Off street parking • Well maintained rear garden measuring 98ft x 20ft.

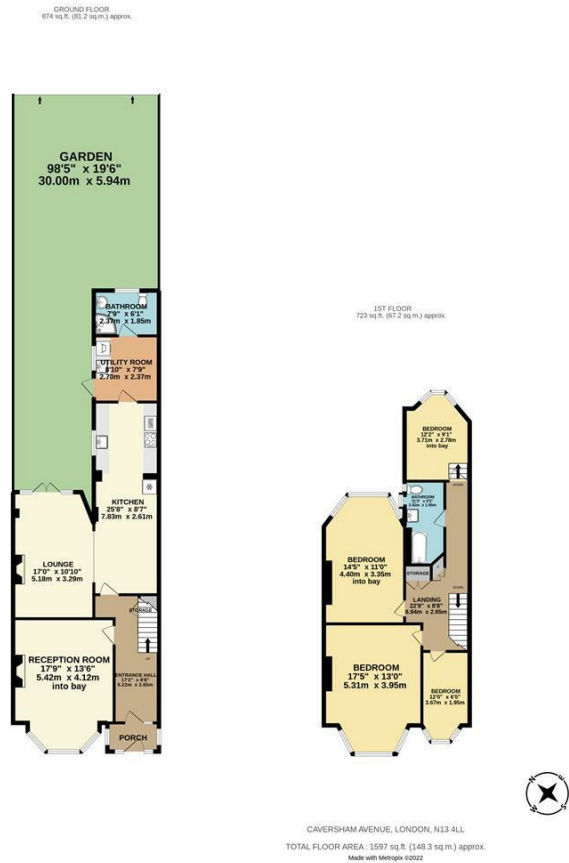
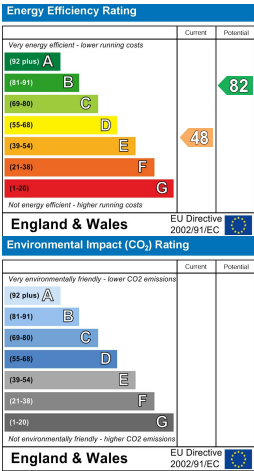
- Edwardian family home
- Four original bedrooms
- Two receptions
- Modern kitchen/diner
- Two bath/shower rooms
- Many period features
- Off street parking
- Well maintained rear garden





Caversham Avenue
Palmers Green
London
N13 4LL

Tenure: Freehold
Gross Internal Area: 1597.00 sq ft



Property particulars as supplied by Anthony Webb Estate Agents are set out as a general outline in accordance with the Property Misdescriptions Act (1991) only for the guidance of intending purchasers of lessees, and do not constitute any part of an offer or contract. Details are given without any responsibility, and any intending purchasers, lessees or third parties should not rely on them as inspection or otherwise as to the correctness of each of them. We have not carried out a structural survey and the services, appliances and specific fittings have not been tested. All photographs, measurements, floor plans and distances referred to are given as a guide only and should not be relied upon for the purchase of carpets or any other fixtures statements or representations of fact, but must satisfy themselves by or of fittings, gardens, roof terraces, balconies and communal gardens as well as tenure and lease details cannot have their accuracy guaranteed for intending purchasers. Lease details, service ground rent (where applicable) are given as a guide only and should be checked and confirmed by your solicitor prior to exchange of contracts. no person in the employment of Anthony Webb has any authority to make any representation or warranty whatever in relation to this property.

348 Green Lanes, London N13 5TJ
020 8882 7888
palmersgreen@anthonywebb.co.uk
anthonywebb.co.uk

