



**PORTFOLIO**  
from

  
brown & merry

St Johns Drive, Stone, Buckinghamshire HP17 8YJ

# 29a St Johns Drive, Stone

*An attractive three double bedroom, two bath, detached family home offering excellent accommodation. Well presented throughout.*



## Covered Porch

## Entrance Hall

Ceramic tiled floor, doors to all rooms, stairs to first floor landing.

## Cloakroom

Ceramic tiled floor, WC and wash hand basin.

## Lounge

15'1 x 9'8

Large picture window to front aspect, ceramic tiled floor, feature fireplace, a calm open plan space opening onto the dining area.

## Kitchen / Diner

21'9 x 8'13

Comprehensively fitted with a generous range of wall and base units with complementary worksurfaces over, integrated dishwasher, oven and hob with extractor over, space for fridge / freezer, window to rear garden, patio doors to the terrace.



## Utility

12'11 x 7'8

Range of wall and base units, sink with taps over, space and plumbing for washing machine, door to rear garden and personal door to garage.

## Master Bedroom

18'4 x 12'3

A generous room with window to front aspect enjoying views to the Chiltern Hills, range of built in wardrobes.

## En-Suite

Recently re-fitted to an high standard, walk in shower, WC and wash hand basin, window to rear.

## Bedroom Two

13'8 x 7'8

Window to front aspect, eaves storage.

## Bedroom Three

9'4 x 8'7

Window to front aspect, enjoying lovely views to the Chiltern Hills



## Family Bathroom

Recently re-fitted to a high specification, jacuzzi bath, WC and wash hand basin, window to rear.

## OUTSIDE

To the front; a large block paved driveway offering parking for several vehicles leads to a single garage, , boundary wall to the front, raised beds and paneled fencing to the boundaries.

## Garage

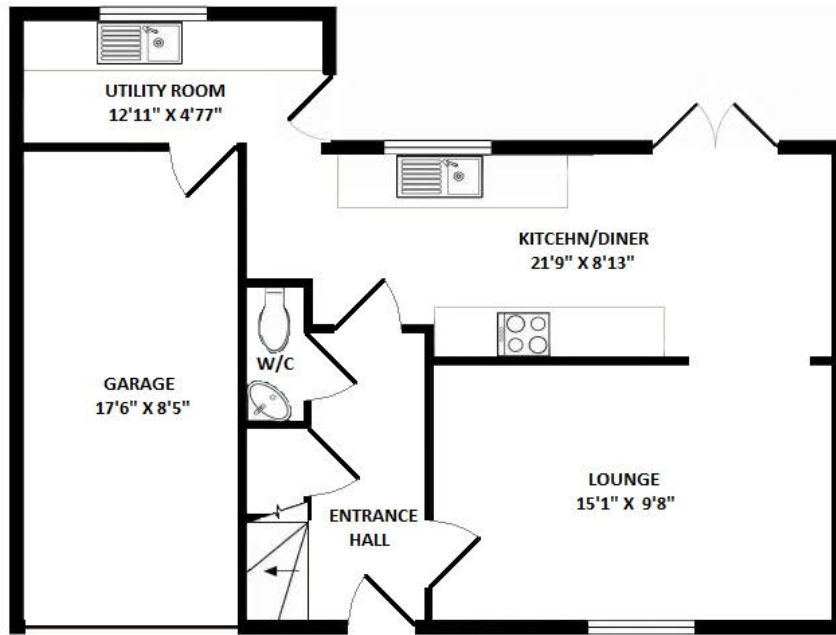
17'6 x 8'5

Ceramic tiled floor, power and lighting, window to the rear aspect, door to rear garden and personal door to house.

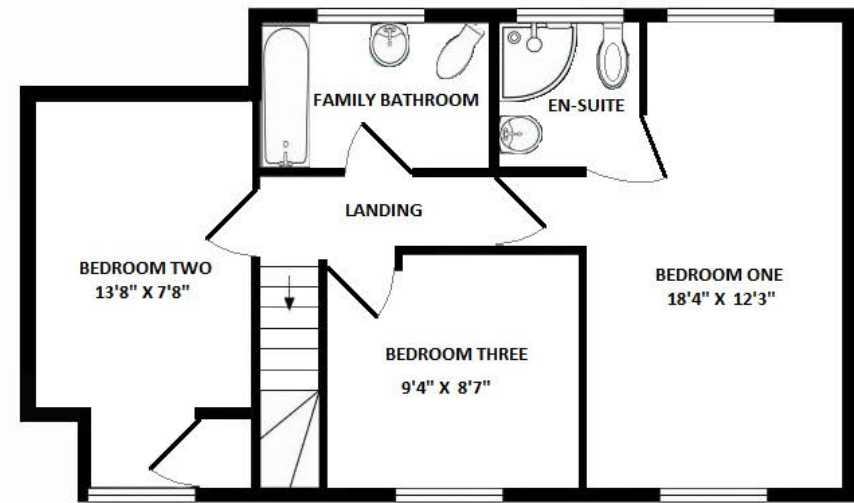
## Rear Garden

Enclosed by mature trees, shrubs and fencing, gated side access to front. Terraced patio area perfect for entertaining, the remainder of the garden is laid to lawn, the rear garden enjoys a good degree of seclusion.





GROUND FLOOR



FIRST FLOOR

# welcome to St Johns Drive, Stone, Buckinghamshire HP17 8YJ

Conveniently located in the village of Stone, this light and spacious three double bedroom detached house, has two bathrooms plus a cloakroom. Spacious sitting room, kitchen / diner, utility. Driveway parking for several vehicles and a garage. The rear garden offers a good level of privacy and enjoys a large terrace, ideal for alfresco dining.

OIEO

**£450,000**

- Three double bedrooms
- Master with re-fitted ensuite
- Re-fitted family bathroom
- Ample parking and garage

Tenure: Freehold

EPC Rating: C

**PORTFOLIO**  
from

  
**brown & merry**



To find out more information or to arrange a viewing call

**01296 624444**

or email [wendover@sequencehome.co.uk](mailto:wendover@sequencehome.co.uk)

Woollerton House, 7 High Street, Wendover, Buckinghamshire,  
HP22 6DU

[brownandmerry.co.uk](http://brownandmerry.co.uk)

1. MONEY LAUNDERING REGULATIONS Intending purchasers will be asked to produce identification documentation at a later stage and we would ask for your co-operation in order that there is no delay in agreeing the sale. 2. These particulars do not constitute part or all of an offer or contract. 3. The measurements indicated are supplied for guidance only and as such must be considered incorrect. Potential buyers are advised to recheck measurements before committing to any expense. 4. We have not tested any apparatus, equipment, fixtures or services and it is in the buyers interest to check the working condition of any appliances. 5. Where an EPC, or a Home Report (Scotland only) is held for this property, it is available for inspection at the branch by appointment. If you require a printed version of a Home Report, you will need to pay a reasonable production charge reflecting printing and other costs. 6. We are not able to offer an opinion either written or verbal on the content of these reports and this must be obtained from your legal representative. 7. Whilst we take care in preparing these reports, a buyer should ensure that his/her legal representative confirms as soon as possible all matters relating to title including the extent and boundaries of the property and other important matters before exchange of contracts.

Trading name of Sequence (UK) Limited which is registered in England and Wales under company number 4268443, Registered Office is Cumbria House, 16-20 Hockliffe Street, Leighton Buzzard, Bedfordshire, LU7 1GN. VAT Registration Number is 500 2481 05.

