



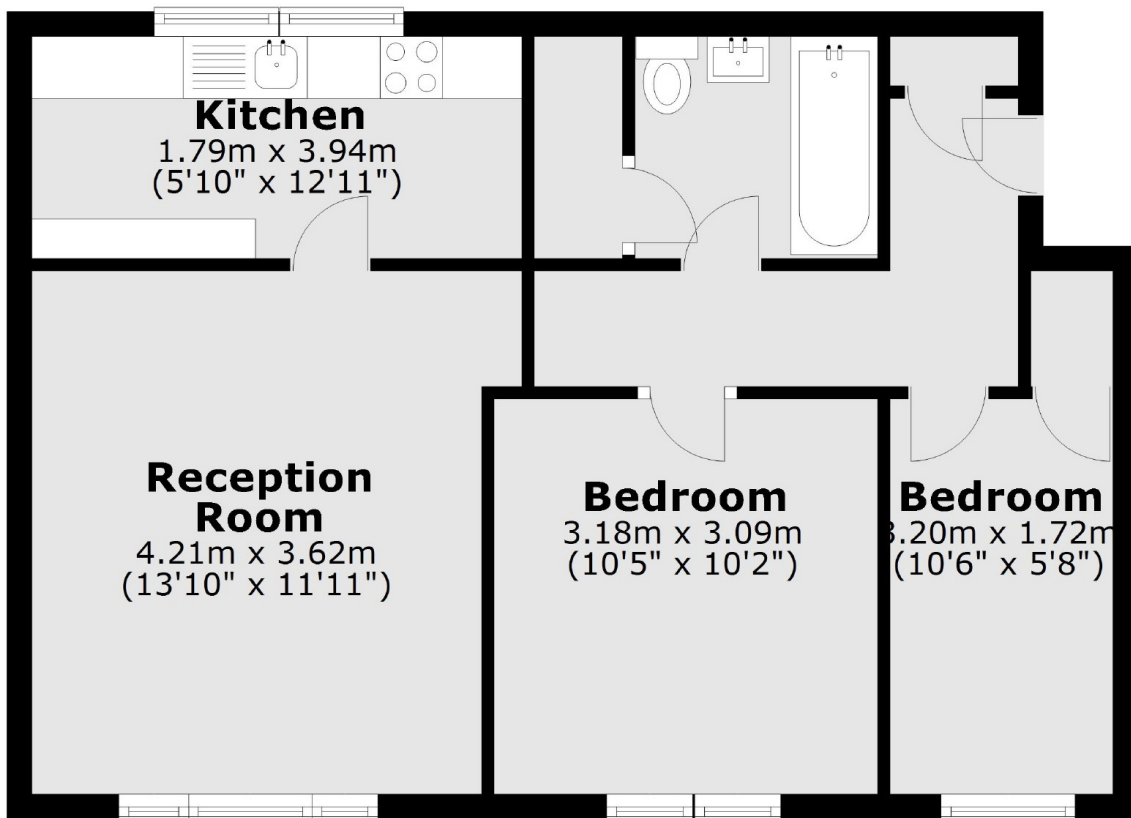
Cromwell Close, W3

£350,000

A purpose built two bedroom apartment located in the heart of Acton. This third floor flat comes with allocated parking, is offered with no onward chain and would be an ideal purchase for first time buyers and investors alike.

Cromwell Close is located within 500 metres of Acton Central station as well as the shops and amenities of Churchfield Road and Acton High Street.

Third Floor



Total area: approx. 51.6 sq. metres (555.9 sq. feet)

Robertson Smith & Kempson Acton Sales
137 High Street, Acton,
London, W3 6LY
020 8896 3996
actonsales@robertsonsmithandkempson.co.uk

Energy Rating: C. We aim to make our particulars both accurate and reliable. However they are not guaranteed; nor do they form part of an offer or contract. If you require clarification on any points then please contact us, especially if you're traveling some distance to view. Please note that appliances and heating systems have not been tested and therefore no warranties can be given as to their good working order.