

# TATES

020 7602 6020



## North End House, London W14 0RZ

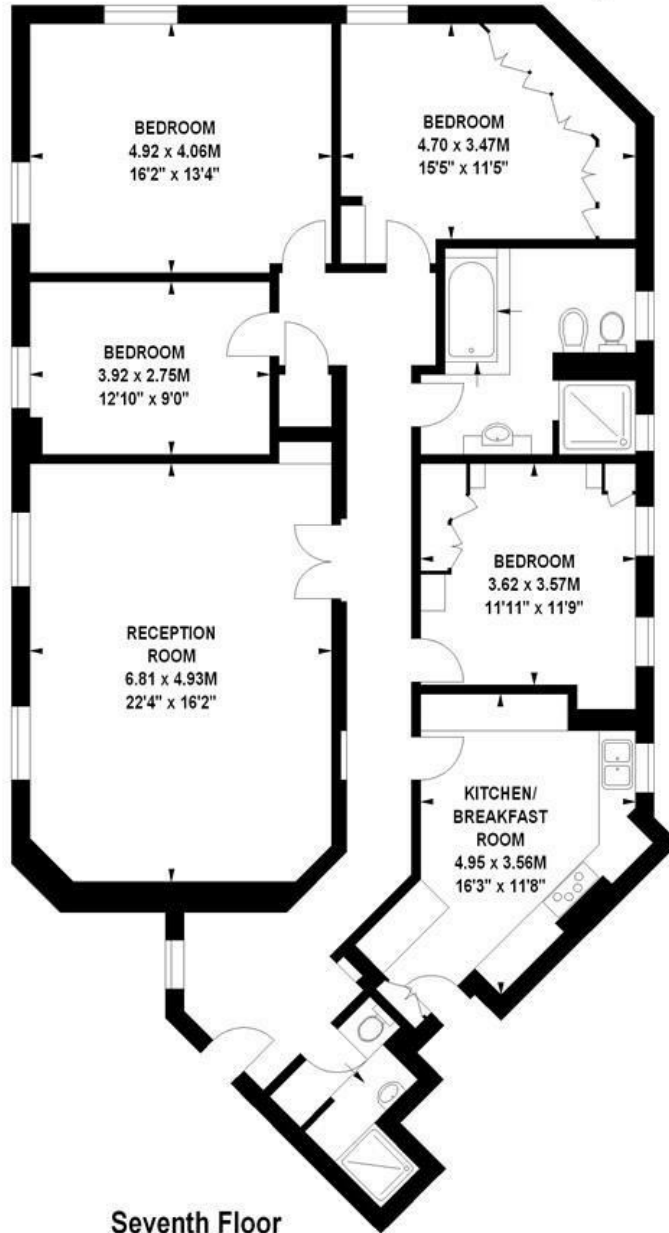
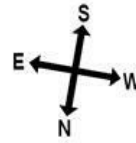
**£4,500 Per month**

- Four double bedrooms
- Excellent condition
- Furnished or unfurnished
- Top floor (with lift)
- Two bathrooms
- Available early August
- 24 hour porter
- Energy Efficiency Rating Current Band: F

# North End House, W14

Approximate gross internal area

154 sq m / 1658 sq ft



## Seventh Floor

Illustration for identification purposes only, not to scale  
 All measurements are maximum, and includes wardrobes and window bays where applicable  
 Prepared by Mays Floorplans © . Tel 020 7381 4975

Whilst these particulars are produced in good faith and are believed to be correct, no guarantee is given, nor any responsibility accepted, by Tates nor by any of its representatives, for their accuracy. The particulars do not constitute part of any offer or contract, and it is recommended that such things as measurements, condition, structure, services, appliances, fixtures and fittings and facilities are all independently assessed by the prospective purchaser or renter of the subject property prior to committing to any contract.

| Energy Efficiency Rating                    |           |                         |
|---|-----------|-------------------------|
|   | Current   | Potential               |
| Very energy efficient - lower running costs |           |                         |
| (92 plus) <b>A</b>                          |           |                         |
| (81-91) <b>B</b>                            |           | <b>84</b>               |
| (69-80) <b>C</b>                            | <b>71</b> |                         |
| (55-68) <b>D</b>                            |           |                         |
| (39-54) <b>E</b>                            |           |                         |
| (21-38) <b>F</b>                            |           |                         |
| (1-20) <b>G</b>                             |           |                         |
| Not energy efficient - higher running costs |           |                         |
| England & Wales                             |           | EU Directive 2002/91/EC |

135 Hammersmith Road, West Kensington, London W14 0QL

mail@tatesestates.co.uk

tatesestates.co.uk

Tates (Agents) Ltd. Registered in England and Wales No. 02356337  
 Registered Office: Imperial House, 8 Keane Street, London WC2B 4AS

