



**Washbourne Close, Plymouth PL1 4ST**



**welcome to**

## **Washbourne Close, Plymouth**

A spacious two double bedroom mid terrace house with a lovely enclosed rear garden. Features include; open plan kitchen/lounge, modern bathroom & large double glazed windows throughout that let in an abundance of light!

Being Sold With No Chain!!



### **Entrance Porch**

Radiator

### **Lounge**

17' 8" x 14' ( 5.38m x 4.27m )

Rear double glazed window. Stairs to first floor.

Radiator. Patio door to the rear.

### **Kitchen**

Front double glazed window. Wall and base units with wood effect work tops and 1 1/2 sink/drainers.

Tiled to the principal areas. Gas hob, electric oven.

Space for washing machine and fridge.

### **Bedroom One**

10' 6" x 8' 11" ( 3.20m x 2.72m )

Rear double glazed window. Radiator. Over stairs

storage with a built in clothes rail

### **Bedroom Two**

8' 6" x 7' 4" ( 2.59m x 2.24m )

Front double glazed window. Radiator.

### **Bathroom**

Obscure front double glazed window. Walk in shower, low level wc and pedestal wash hand basin.

Heated towel rail. Storage shelves.

### **Rear Garden**

Fenced border with patio seating area. Fire escape

### **Parking**

Allocated parking space.



***view this property online*** [fox-and-sons.co.uk/Property/SAS104701](https://fox-and-sons.co.uk/Property/SAS104701)



welcome to

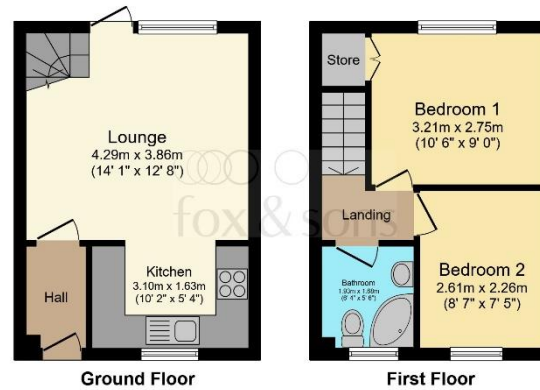
## Washbourne Close, Plymouth

- TWO BEDROOMS
- NO ONWARD CHAIN
- ENCLOSED REAR GARDEN
- ALLOCATED PARKING
- CLOSE TO DEVONPORT NAVAL BASE

Tenure: Freehold EPC Rating: Awaited

offers in excess of

**£150,000**



Total floor area 46.1 sq.m. (496 sq.ft.) approx.  
This floorplan is for illustrative purposes only and is not drawn to scale. Measurements, floor-areas, openings and orientations are approximate. They should not be relied upon for any purpose and do not form any part of an agreement. No liability is taken for any error or mis-statement. All parties must rely on their own inspections.



Please note the marker reflects the postcode not the actual property

**view this property online** [fox-and-sons.co.uk/Property/SAS104701](https://fox-and-sons.co.uk/Property/SAS104701)



Property Ref:  
SAS104701 - 0004

1. MONEY LAUNDERING REGULATIONS Intending purchasers will be asked to produce identification documentation at a later stage and we would ask for your co-operation in order that there is no delay in agreeing the sale. 2. These particulars do not constitute part or all of an offer or contract. 3. The measurements indicated are supplied for guidance only and as such must be considered incorrect. Potential buyers are advised to recheck measurements before committing to any expense. 4. We have not tested any apparatus, equipment, fixtures or services and it is in the buyers interest to check the working condition of any appliances. 5. Where an EPC, or a Home Report (Scotland only) is held for this property, it is available for inspection at the branch by appointment. If you require a printed version of a Home Report, you will need to pay a reasonable production charge reflecting printing and other costs. 6. We are not able to offer an opinion either written or verbal on the content of these reports and this must be obtained from your legal representative. 7. Whilst we take care in preparing these reports, a buyer should ensure that his/her legal representative confirms as soon as possible all matters relating to title including the extent and boundaries of the property and other important matters before exchange of contracts.

Fox & Sons is a trading name of Sequence (UK) Limited which is registered in England and Wales under company number 4268443, Registered Office is Cumbria House, 16-20 Hockliffe Street, Leighton Buzzard, Bedfordshire, LU7 1GN. VAT Registration Number is 500 2481 05.

  
fox & sons



**01752 847151**



[saltash@fox-and-sons.co.uk](mailto:saltash@fox-and-sons.co.uk)



20 Fore Street, SALTASH, Cornwall, PL12 6JL



**[fox-and-sons.co.uk](https://fox-and-sons.co.uk)**