



Beresford Gardens, Middlesex, TW4 5HW

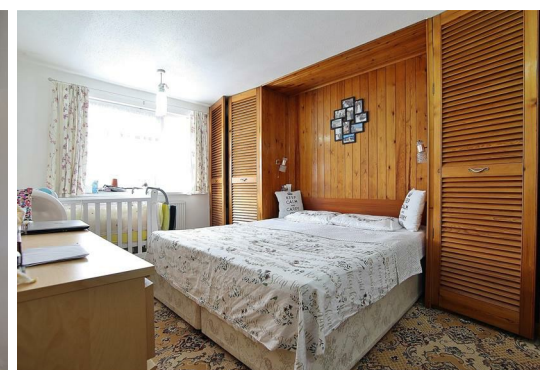
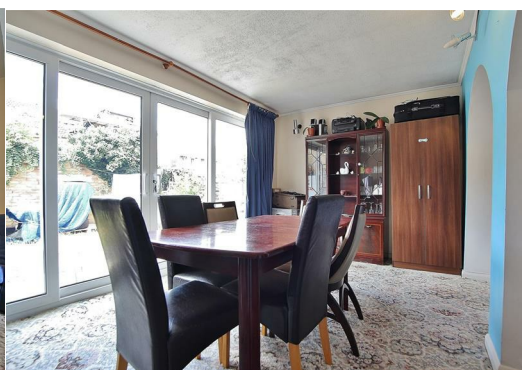
Spacious four bedroom family home located just off Wellington Road South in Hounslow. Offering spacious living area with separate room for dining, modern fitted kitchen, and access to rear private garden. The first floor offers three double bedrooms, and a modern family bathroom. The top floor offers the master bedroom with en-suite shower room.

Beresford Gardens is located close to all local schools, shops and amenities as well as offering great transport links to Hounslow Central and Heathrow Airport.

£1,700 PER MONTH

Energy Efficiency Rating		
	Current	Potential
<i>Very energy efficient - lower running costs</i>		
(92 plus) A		
(81-91) B		
(69-80) C	69	69
(55-68) D		
(39-54) E		
(21-38) F		
(1-20) G		
<i>Not energy efficient - higher running costs</i>		
England & Wales	EU Directive 2002/91/EC	

Environmental Impact (CO ₂) Rating		
	Current	Potential
<i>Very environmentally friendly - lower CO2 emissions</i>		
(92 plus) A		
(81-91) B		
(69-80) C	66	67
(55-68) D		
(39-54) E		
(21-38) F		
(1-20) G		
<i>Not environmentally friendly - higher CO2 emissions</i>		
England & Wales	EU Directive 2002/91/EC	



6 South Street, Isleworth, TW7 7BG
 Tel: 0208 568 4433
 info@oakhillagents.co.uk
 www.oakhillagents.co.uk

OAKHILL