

FOR  
SALE



1D Sienna Close, Chessington, Surrey KT9 2HQ

£364,950 - Leasehold



252, Chessington Road, Ewell, Epsom, KT19 9XF 0208 394 2555 [sales@jacksonnoon.com](mailto:sales@jacksonnoon.com)

## PROPERTY SUMMARY

JACKSON NOON ESTATE AGENTS are pleased to offer this BRAND NEW TWO DOUBLE BEDROOM APARTMENT with open plan lounge/kitchen area with integrated appliances, BATHROOM AND SHOWER ROOM, double glazing, ALLOCATED PARKING.....999 YEAR LEASE.....KEY WITH AGENT.

## POINTS OF INTEREST

- *Brand New Apartment*
- *Two Double Bedrooms*
- *Open Plan Lounge/Kitchen*
- *Bathroom & Shower Room*
- *Allocated Parking*
- *999 Year Lease*
- *Help To Buy Available*
- *Close To Chessington South Station*



## ROOM DESCRIPTIONS

### Front Door to

#### Entrance Hall

Stairs to first floor

#### Open Plan Lounge/Kitchen

39' 0" x 9' 0" (11.89m x 2.74m) Two heaters, double glazed window, skylights

#### Kitchen Area

Single drainer sink unit inset in roll top work surface, range of cupboards and units, integrated fridge freezer and autowash, fitted oven and hob, double glazed window

#### Bedroom 1

12' 4" x 10' 3" (3.76m x 3.12m) Heater, double glazed window

#### En-Suite Shower Room

Comprising shower cubicle, low level wc, wash hand basin

#### Bedroom 2

10' 3" x 9' 8" (3.12m x 2.95m) Heater, double glazed window

#### Bathroom

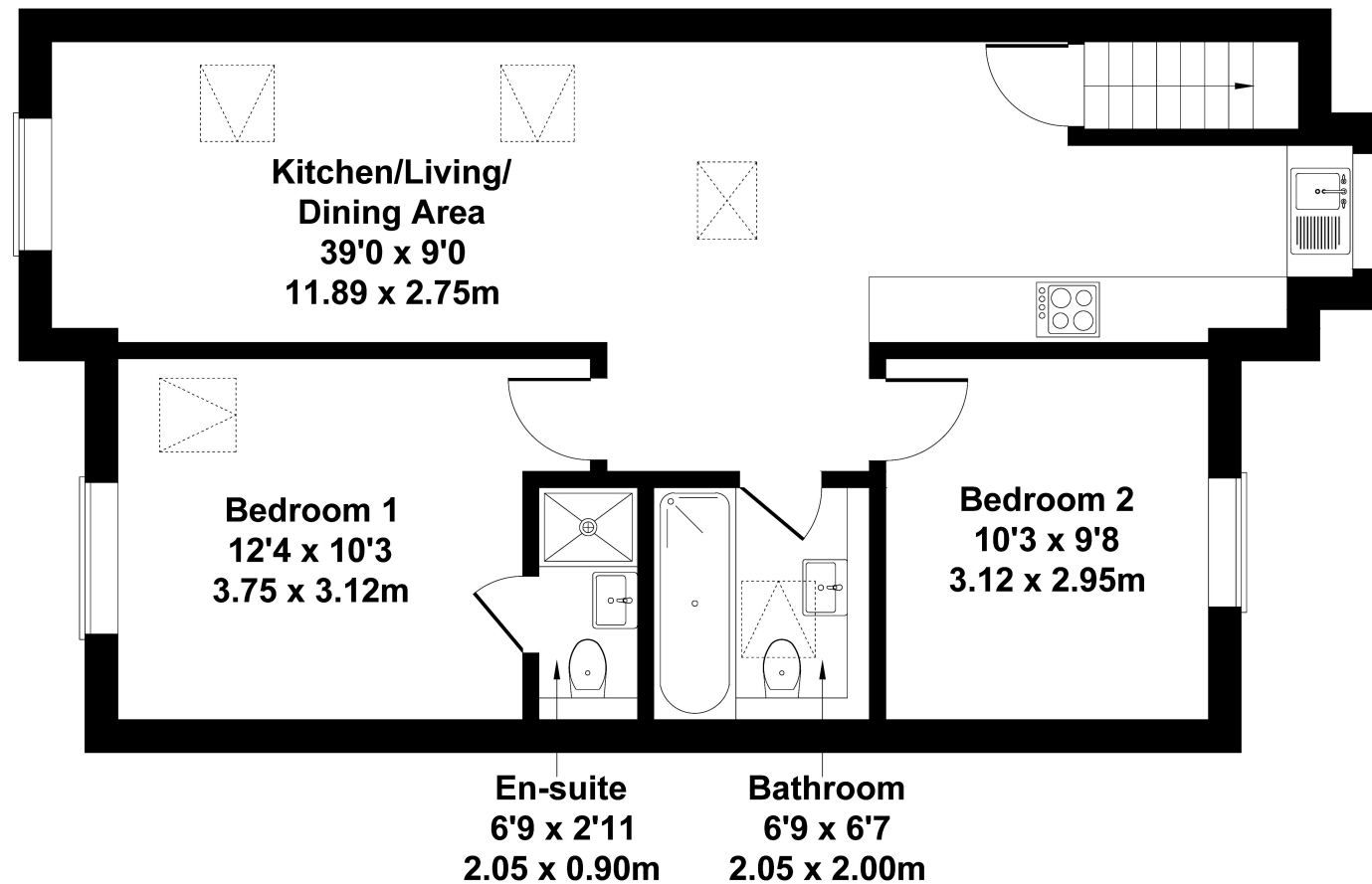
Comprising panel enclosed bath, low level wc, wash hand basin, part tiled walls, skylight

### Outside

#### Allocated Parking

# Sienna Close

Approximate Gross Internal Area  
710 sq ft - 66 sq m



## FIRST FLOOR PLAN

Not to Scale. Produced by The Plan Portal 2022  
For Illustrative Purposes Only.