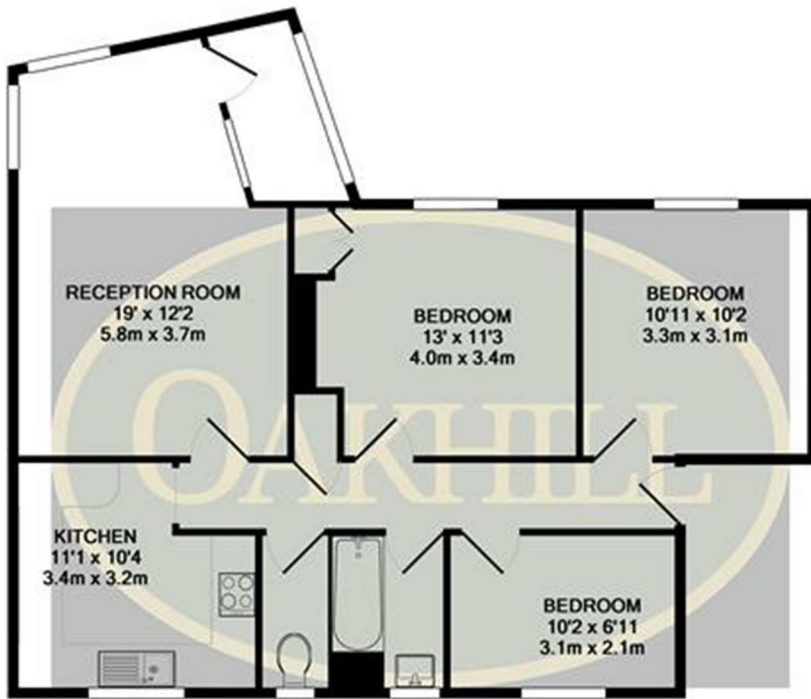




## The Avenue, Twickenham, London TW1 1QQ

A deceptively large three double bedroom flat, perfect for the growing family or professional sharers. There is a large reception room with a separate conservatory area, three double bedrooms, a fully fitted kitchen and modern family bathroom with separate WC. Further benefiting from permit parking and an external storage shed.

**£1,650 PER MONTH**



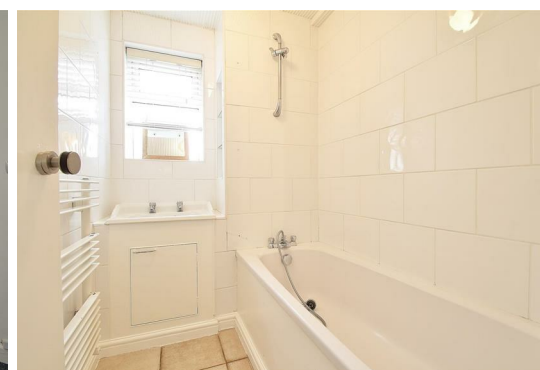
TOTAL APPROX. FLOOR AREA 823 SQ.FT. (76.5 SQ.M.)

Whilst every attempt has been made to ensure the accuracy of the floor plan contained here, measurements of doors, windows, rooms and any other items are approximate and no responsibility is taken for any error, omission, or mis-statement. This plan is for illustrative purposes only and should be used as such by any prospective purchaser. The services, systems and appliances shown have not been tested and no guarantee as to their operability or efficiency can be given.  
Made with Metropix ©2019



Energy Efficiency Rating		Current	Potential
Very energy efficient - lower running costs			
(92 plus) A			
(81-91) B			
(69-80) C			
(55-68) D		52	64
(39-54) E			
(21-38) F			
(1-20) G			
Not energy efficient - higher running costs			
<b>England &amp; Wales</b>	EU Directive 2002/91/EC		

Environmental Impact (CO <sub>2</sub> ) Rating		Current	Potential
Very environmentally friendly - lower CO <sub>2</sub> emissions			
(92 plus) A			
(81-91) B			
(69-80) C			
(55-68) D		48	62
(39-54) E			
(21-38) F			
(1-20) G			
Not environmentally friendly - higher CO <sub>2</sub> emissions			
<b>England &amp; Wales</b>	EU Directive 2002/91/EC		



6 South Street, Isleworth, TW7 7BG  
Tel: 0208 568 4433  
info@oakhillagents.co.uk  
www.oakhillagents.co.uk

OAKHILL