

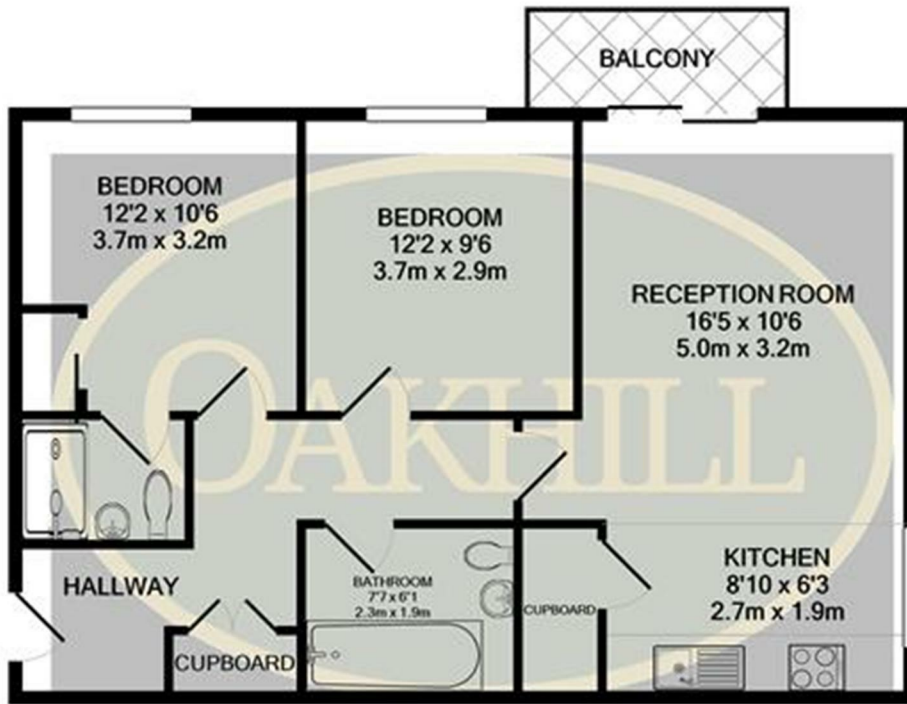


Union Lane, Isleworth, Middlesex TW7 6GJ

A spacious two double bedroom apartment just moments walk from The River Thames. Offering a welcoming hallway with excellent storage, two double bedrooms with built-in wardrobes, a modern kitchen, and a spacious and light living area with direct access to a private balcony. The master bedroom offers an en-suite shower room. Further benefiting allocated parking for one car.

Union Lane is a short distance to Syon Lane Rail Station providing easy access to Central London, and is also within walking distance to Syon Park and The River Thames.

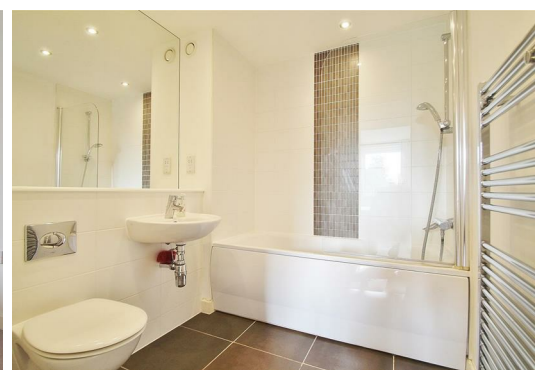
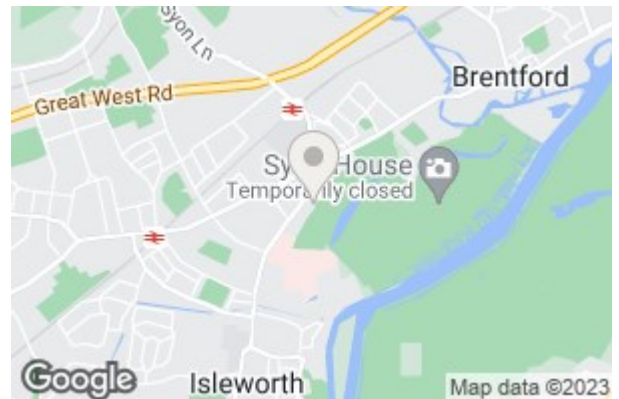
£1,400 PER MONTH



Whilst every attempt has been made to ensure the accuracy of the floor plan contained here, measurements of doors, windows, rooms and any other items are approximate and no responsibility is taken for any error, omission, or mis-statement. This plan is for illustrative purposes only and should be used as such by any prospective purchaser. The services, systems and appliances shown have not been tested and no guarantee as to their operability or efficiency can be given
Made with Metropix ©2021

Energy Efficiency Rating		Current	Potential
Very energy efficient - lower running costs			
(92 plus) A			
(81-91) B			
(69-80) C			
(55-68) D			
(39-54) E			
(21-38) F			
(1-20) G			
Not energy efficient - higher running costs			
England & Wales	EU Directive 2002/91/EC	84	84

Environmental Impact (CO ₂) Rating		Current	Potential
Very environmentally friendly - lower CO ₂ emissions			
(92 plus) A			
(81-91) B			
(69-80) C			
(55-68) D			
(39-54) E			
(21-38) F			
(1-20) G			
Not environmentally friendly - higher CO ₂ emissions			
England & Wales	EU Directive 2002/91/EC	94	95



6 South Street, Isleworth, TW7 7BG
Tel: 0208 568 4433
info@oakhillagents.co.uk
www.oakhillagents.co.uk

OAKHILL