

FOR
SALE



Larkspur Way, West Ewell, Surrey KT19 9LX

Offers Over £335,000 - Leasehold 252, Chessington Road, Ewell, Epsom, KT19 9XF 0208 394 2555 sales@jacksonnoon.com

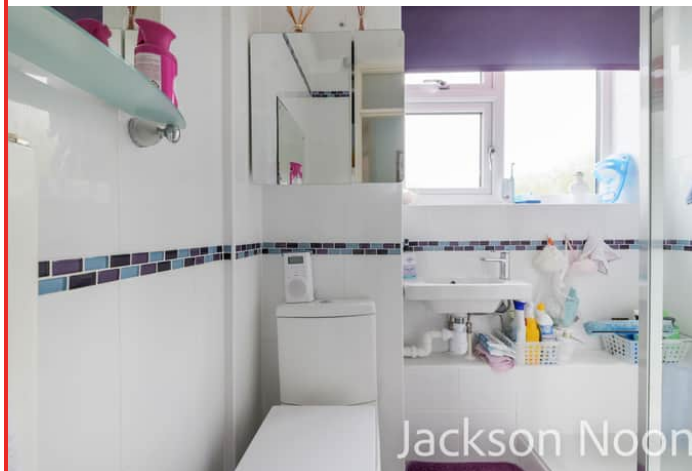


PROPERTY SUMMARY

JACKSON NOON ESTATE AGENTS are pleased to offer this TWO DOUBLE BEDROOM FIRST FLOOR MAISONETTE with double glazing, gas central heating, REAR GARDEN, GARAGE....CALL NOW TO VIEW.

POINTS OF INTEREST

- *First Floor Maisonette*
- *Two Double Bedrooms*
- *Double Glazing*
- *Gas Central Heating*
- *Rear Garden*
- *Garage*



ROOM DESCRIPTIONS

Front Door to

Entrance Hall

Stairs to First Floor

Landing

Access to loft, radiator, double glazed window

Lounge

16' 7" x 12' 7" (5.05m x 3.84m) Radiator, double glazed window

Kitchen

10' 6" x 9' 9" (3.20m x 2.97m) Single drainer 1 1/2 bowl stainless steel sink unit inset in roll top work surface, range of cupboards and units, wall mounted boiler. space for fridge freezer, plumbing for autowash, space for cooker, extractor, radiator, two double glazed windows

Bedroom 1

14' 5" x 8' 11" (4.39m x 2.72m) Radiator, double glazed window

Bedroom 2

12' 7" x 11' 8" (3.84m x 3.56m) Radiator fitted cupboard, double glazed window

Shower Room

Comprising shower cubicle with fitted shower, low level wc, wash hand basin, heated towel rail, tiled walls, double glazed window

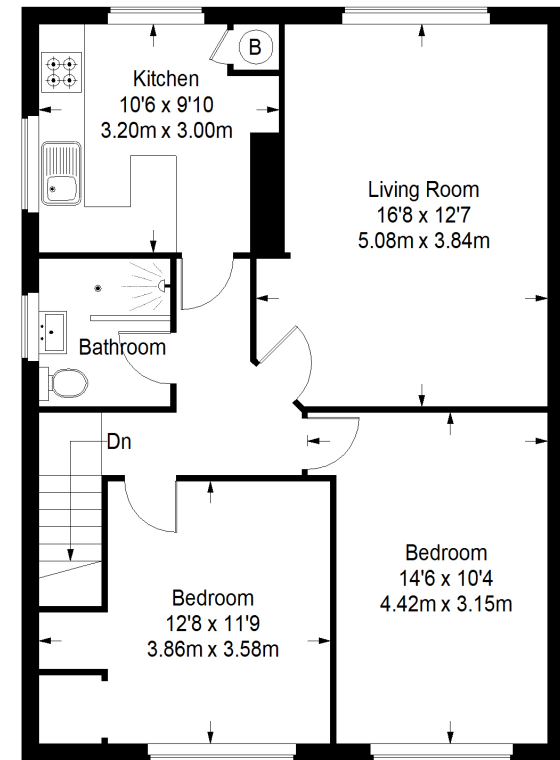
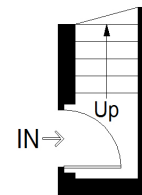
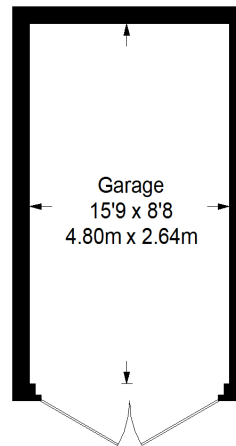
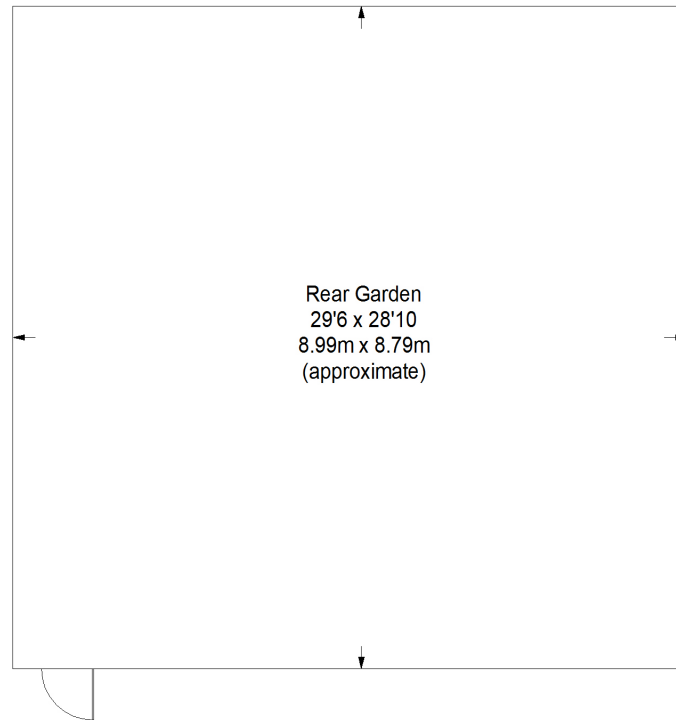
Outside

Rear Garden

Mainly laid to lawn, mature borders, garden shed

Garage

Larkspur Way



Ground Floor
Entrance = 20 sq ft

First Floor = 702 sq ft

Approximate Gross Internal Area
GROUND FLOOR ENTRANCE = 20 sq ft / 1.86 sq m
FIRST FLOOR = 702 sq ft / 65.22 sq m
GARAGE = 136 sq ft / 12.63 sq m
Total = 858 sq ft / 79.71 sq m



This plan is for layout guidance only. Not drawn to scale unless stated. Windows and door openings are approximate. Whilst every care is taken in the preparation of this plan, please check all dimensions, shapes and compass bearings before making any decisions reliant upon them. (ID357409)