





Description

Situated within a private gated road, a rarely available stunning detached family home, offering 5 double bedrooms, 2 reception rooms, family bathroom and 2 en-suites.

This bright and airy property benefits from great living space extending to just of 3,000 sq.ft, finished to a high specification. Privacy is a strong feature with a gated main road entrance through a long woodland driveway leading a further secure gated entrance to the property itself. The property includes 4-car garage with plentiful a loft which could be created into further accommodation (STPP).

Within the grounds there is also a fully refurbished 'heritage' granary building offering a self contained studio annex. It has a fully fitted kitchen and en-suite/utility-room with mains services connected. This offers numerous possibilities as additional accommodation, office space, leisure area, playroom.

Location

The location is convenient to the village of Iver providing a mainline Crossrail station to London (only 3.5 miles distance), green spaces and excellent local state and independent schools. The village shopping facilities include a thriving village hall, schooling and numerous shops. The property is positioned, within easy reach of the M40 and M25 motorways, providing routes to central London (17 miles) and Heathrow Airport (8.7 miles). The property is located approximately 0.5 of a mile from the world famous Pinewood Studios.





The Granary, Denham Road, Iver, SL0

Approximate Area = 3239 sq ft / 300.9 sq m (includes garages)

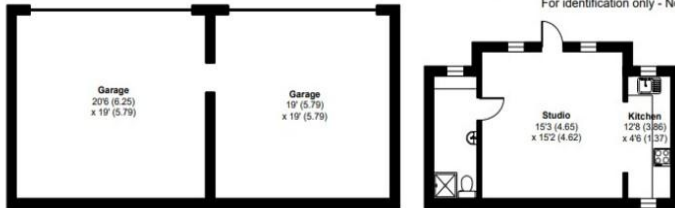
Limited Use Area(s) = 84 sq ft / 7.8 sq m

Annexe = 363 sq ft / 33.7 sq m

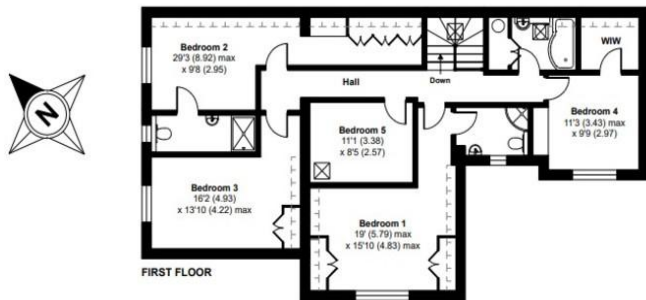
Total = 3686 sq ft / 342.4 sq m

For identification only - Not to scale

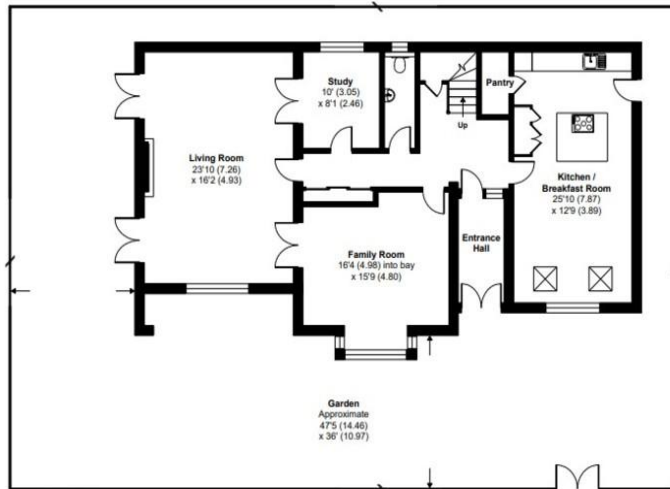
Denotes restricted
head height



ANNEXE



FIRST FLOOR



GROUND FLOOR



20 High Street, Whitton, Twickenham,
TW2 7LT

www.shawandcoestates.com

0208 894 3646

whitton@shawandcoestates.com

Agents Note: Whilst every care has been taken to prepare these particulars, they are for guidance purposes only. All measurements are approximate and are for general guidance purposes only and whilst every care has been taken to ensure their accuracy, they should not be relied upon and potential buyers/tenants are advised to recheck the measurements.