

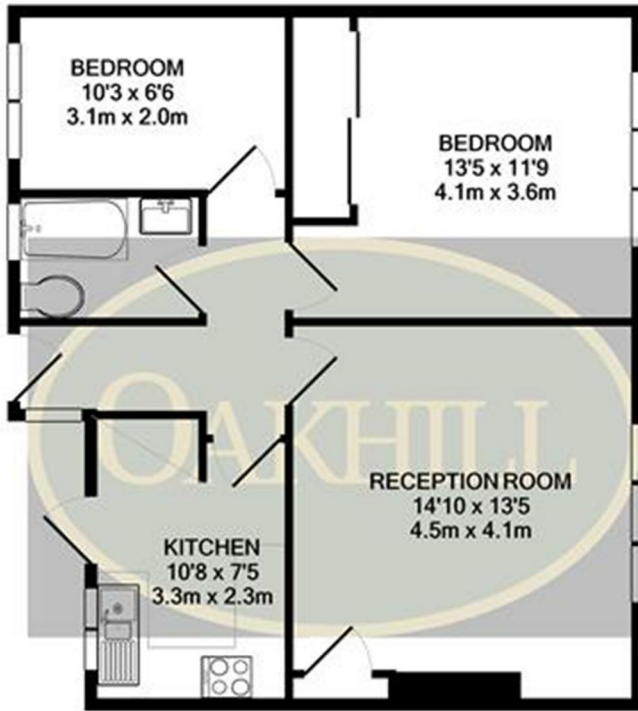


Wheatley Road, Isleworth, Middlesex TW7 6JJ

Spacious two double bedroom first floor maisonette offering a beautiful private rear garden. The accommodation comprises a bright and very good-sized reception room, modern separate kitchen and bathroom. The property further benefits from external storage.

Located within walking distance to Isleworth Station via the footbridge to Woodlands Road and within the catchment area for many great schools.

£1,350 PER MONTH



TOTAL APPROX. FLOOR AREA 610 SQ.FT. (56.7 SQ.M.)

Whilst every attempt has been made to ensure the accuracy of the floor plan contained here, measurements of doors, windows, rooms and any other items are approximate and no responsibility is taken for any error, omission, or mis-statement. This plan is for illustrative purposes only and should be used as such by any prospective purchaser. The services, systems and appliances shown have not been tested and no guarantee as to their operability or efficiency can be given
Made with Metropix ©2021

Energy Efficiency Rating		Current	Potential
Very energy efficient - lower running costs			
(92 plus) A			
(81-91) B			
(69-80) C			
(55-68) D		67	78
(39-54) E			
(21-38) F			
(1-20) G			
Not energy efficient - higher running costs			
England & Wales	EU Directive 2002/91/EC		

Environmental Impact (CO ₂) Rating		Current	Potential
Very environmentally friendly - lower CO ₂ emissions			
(92 plus) A			
(81-91) B			
(69-80) C			
(55-68) D			
(39-54) E			
(21-38) F			
(1-20) G			
Not environmentally friendly - higher CO ₂ emissions			
England & Wales	EU Directive 2002/91/EC		



6 South Street, Isleworth, TW7 7BG
Tel: 0208 568 4433
info@oakhillagents.co.uk
www.oakhillagents.co.uk

OAKHILL