

PARSONS  
COMPANY



4 Richard Haggard Close, Shipdham, Thetford, IP25 7LL  
£200,000



## 4 Richard Haggard Close, Shipdham, Thetford, IP25 7LL

**£200,000**

A two-bedroom semi-detached bungalow situated in the popular village of Shipdham. The property boasts two double bedrooms, a spacious lounge, fitted kitchen/breakfast room, bathroom, and lean-to. Outside to front, is ample off-street parking with a long drive to garage allowing plenty of room for a caravan/motorhome; Additionally, there a front garden area with laid to lawn grass and shrubs. To the rear is a garden measuring approx. 34ftx37ft (Max) with a patio area and laid to lawn grass, there is also access to the garage (with an inspection pit) via a side door and up & over garage door to front. Double Glazed & Electric Heating.

For room measurements please click on the floor plan option.

### Location

Shipdham is a well-served village offering a variety of amenities and regular bus service between Watton and Dereham. The slightly closer town, Dereham, boasts a good range of both independent shops and retailers, as well as several national supermarkets, including a Tesco Extra, Co-op and Morisons. The town has two secondary schools, range of cafe's, bistro's and restaurants along with transport links into Norwich City centre, King's Lynn and Swaffham. The beautiful North Norfolk coast can also be reached within a 40 minute drive from Shipdham.

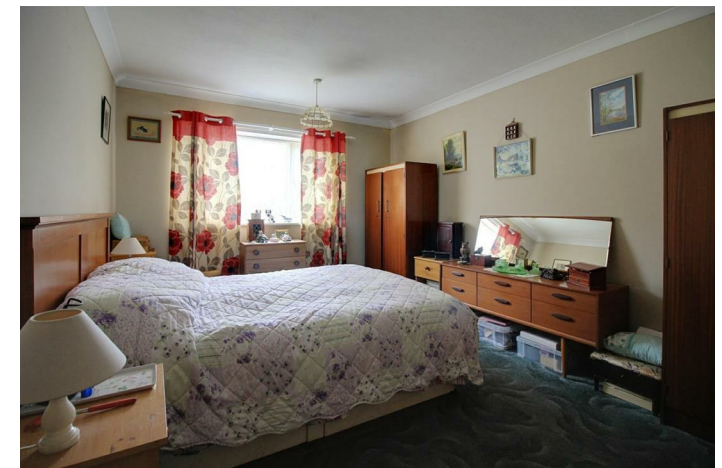
[Directions](#)

## Description

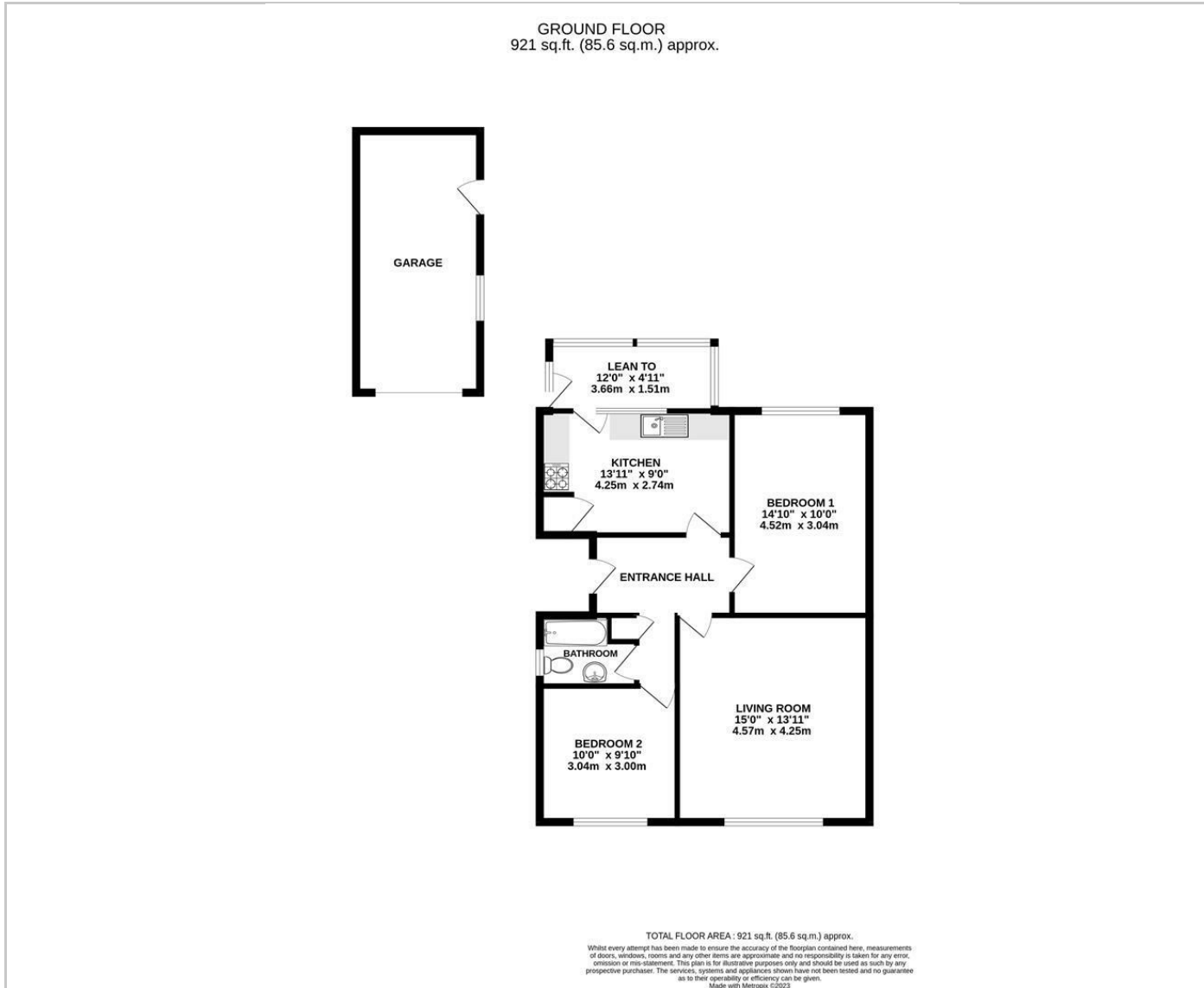


## Situation

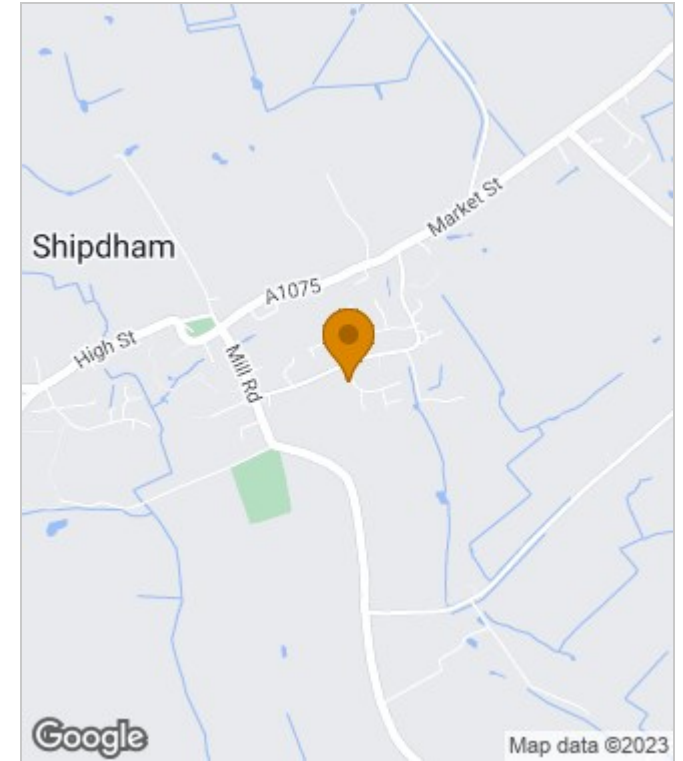
null  
Council Tax Band: B  
Available:



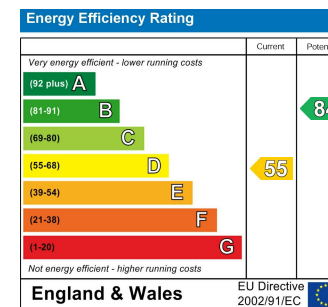
## Floor Plans



## Area Map



## Energy Performance Graph



These particulars, whilst believed to be accurate are set out as a general outline only for guidance and do not constitute any part of an offer or contract. Intending purchasers should not rely on them as statements of representation of fact, but must satisfy themselves by inspection or otherwise as to their accuracy. No person in this firm's employment has the authority to make or give any representation or warranty in respect of the property.

37 Quebec Street, Dereham, Norfolk, NR19 2DJ

Tel: 01362696895 Email: post@parsonsandcompany.co.uk parsonsandcompany.co.uk