



Lanigan Drive | Hounslow | TW3 2EA

Located on a private road on the borders of Whitton/Hounslow. This modern and stylish, 4 bedroom detached home offers a large entrance hall, downstairs w/c, front reception, rear open plan modern fitted kitchen and family TV room. To the first floor are two generous sized bedrooms, with both bedrooms benefiting from en-suites. The second floor lies 2 further bedrooms with an additional family bathroom w/c. Other benefits include front off street parking for 3+ cars, ground floor underfloor heating, new build 10 year warranty (Build Zone - built in 2017)

£670,000 (Offers Over)

Tenure

Freehold

Council Tax Band

F

Viewing Arrangements

Strictly by appointment

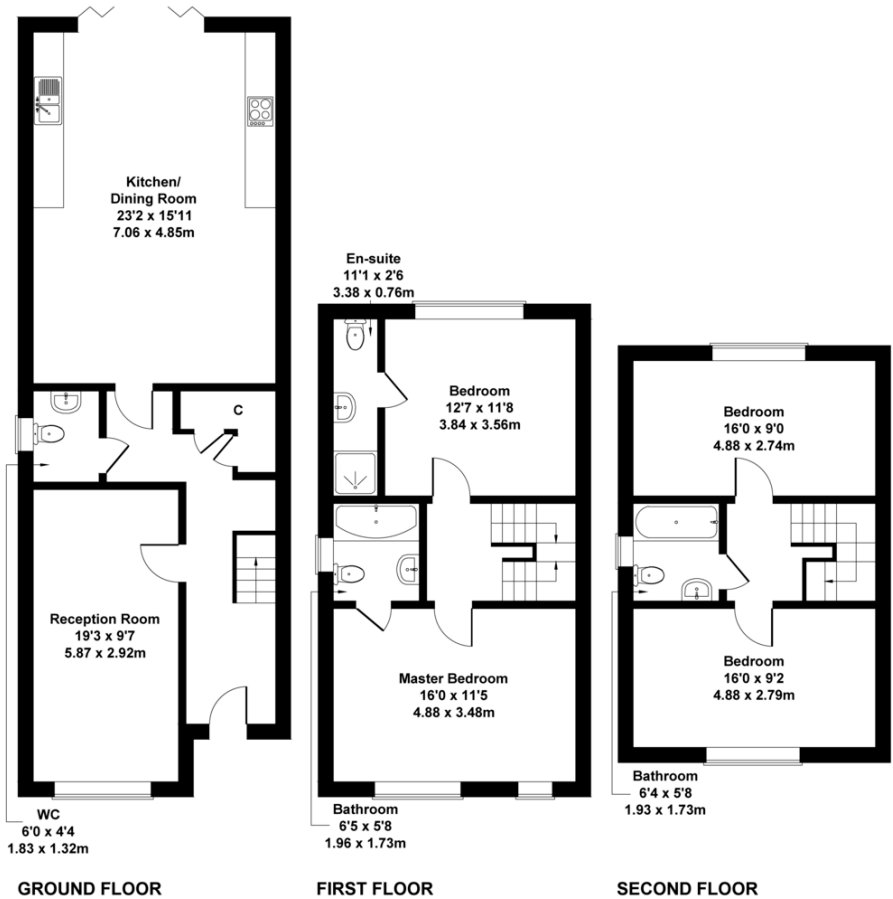
Contact Details

20 High Street
Whitton
Twickenham
TW2 7LT

0208 894 3646
whitton@shawandcoestates.com
www.shawandcoestates.com

Lanigan Drive

Approximate Gross Internal Area
1590 sq ft - 148 sq m



Not to Scale. Produced by The Plan Portal 2022
For Illustrative Purposes Only.

Score	Energy rating	Current	Potential
92+	A		93 A
81-91	B	85 B	
69-80	C		
55-68	D		
39-54	E		
21-38	F		
1-20	G		

Agents Note: Whilst every care has been taken to prepare these particulars, they are for guidance purposes only. All measurements are approximate are for general guidance purposes only and whilst every care has been taken to ensure their accuracy, they should not be relied upon and potential buyers/tenants are advised to recheck the measurements

