



Crymlyn Road, offers over £170,000

- Traditional Semi Detached Home
- Two Receptions & Kitchen
- Three Bedrooms & Bathroom
- Gardens to Front & Rear
- Popular Location
- EPC Rating: C



 3  1  2



About the property

We are very pleased to offer this three bedroom family home in the sought after Crymlyn Road, Skewen. Located with good access to local amenities plus great road links to the M4 motorway and Neath town centre. The property briefly comprises: entrance hall, dining room, living room and kitchen. To the first floor are three bedrooms and a family bathroom. Gardens to the front and the rear. Viewing recommended. To book a viewing please call the team today on 01639 635 115.

Accommodation

Hallway

Stairs to the first floor. Fitted carpet. Under stairs storage. Access to the two reception rooms and Kitchen

Dining Room

11' 11" x 12' 7" (3.63m x 3.84m)

Bay window to the front. Fitted carpet. Fire surround. Picture rail

Living Room

11' 1" x 14' 7" (3.38m x 4.45m)

Bay window to the rear. Laminate flooring. Fireplace with burner. Picture rail

Kitchen

6' 5" x 9' 8" (1.96m x 2.95m)



Fitted with a range of wall and base units with worktops over. Space for appliances. Sink and drainer. Window and door to the rear

Landing

Access to the three bedrooms and bathroom.

Bedroom One

12' 4" x 10' 1" (3.76m x 3.07m)

Window to the front. Fitted carpet. Picture rail.

Bedroom Two

Window to the rear. Fitted carpet. Picture rail.

Bedroom Three

7' 2" x 6' 8" (2.18m x 2.03m)

Window to the front. Fitted carpet.

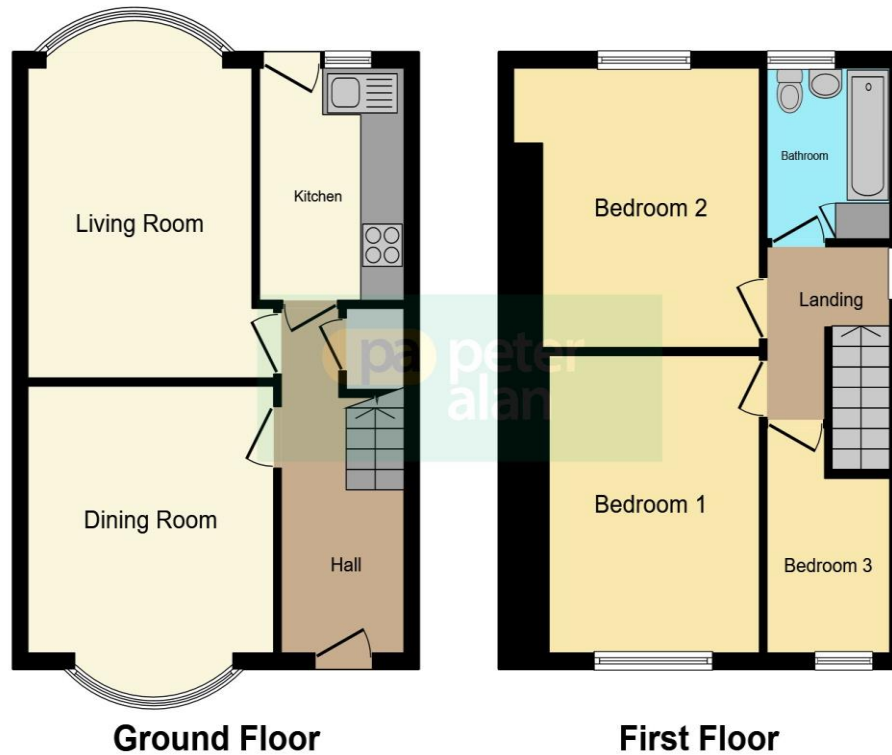
Bathroom

Suite comprising bath with shower and side screen, wash hand basin and Wc. Window to the rear

External

Garden to the front laid to lawn with planting. Rear garden with paved patio, decking and store sheds. Lawn with planting

Floorplan



This floorplan is for illustrative purposes only and is not drawn to scale. Measurements, floor-areas, openings and orientations are approximate. They should not be relied upon for any purpose and do not form any part of an agreement. No liability is taken for any error or mis-statement. All parties must rely on their own inspections.

Important Information

Note while we endeavour to make our sales details accurate and reliable, if there is any point which is of particular interest to you, please contact the office and we will be pleased to confirm the position for you. We have not personally tested any apparatus, equipment, fixtures, fittings or services and cannot verify they are in working order or fit for their purposes. Nothing in these particulars is intended to indicate that carpets or curtains, furnishings or fittings, electrical goods (whether wired or not), Gas fires or light fittings or any other fixtures not expressly included form part of the property offered for sale. This computer generated Floorplan, if applicable, is intended as a general guide to the layout and design of the property. It is not to scale and should not be relied upon for dimensions. Tenure: We cannot confirm the tenure of the property as we have not had access to the legal documents. The buyer is advised to obtain verification from their solicitor or surveyor.

Peter Alan Limited is registered in England and Wales under company number 2073153, Registered Office is Cumbria House, 16-20 Hockliffe Street, Leighton Buzzard, Bedfordshire, LU7 1GN. VAT Registration Number is 500 2481 05. For activities relating to regulated mortgages and non-investment insurance contracts, Peter Alan Limited is an appointed representative of Connells Limited which is authorised and regulated by the Financial Conduct Authority. Connells Limited's Financial Services Register number is 302221. Most buy-to-let