



## Streatham Common North, SW16

£750,000

An immaculate three bedroom first floor flat overlooking Streatham Common boasting an abundance of space and natural light. This elegant home has been meticulously kept with an abundance of original features throughout.

- Three Double Bedrooms
- Share Of Freehold
- Immaculate Condition
- Views Of Streatham Common
- Close To Amenities & Transport
- Highly Desirable Location



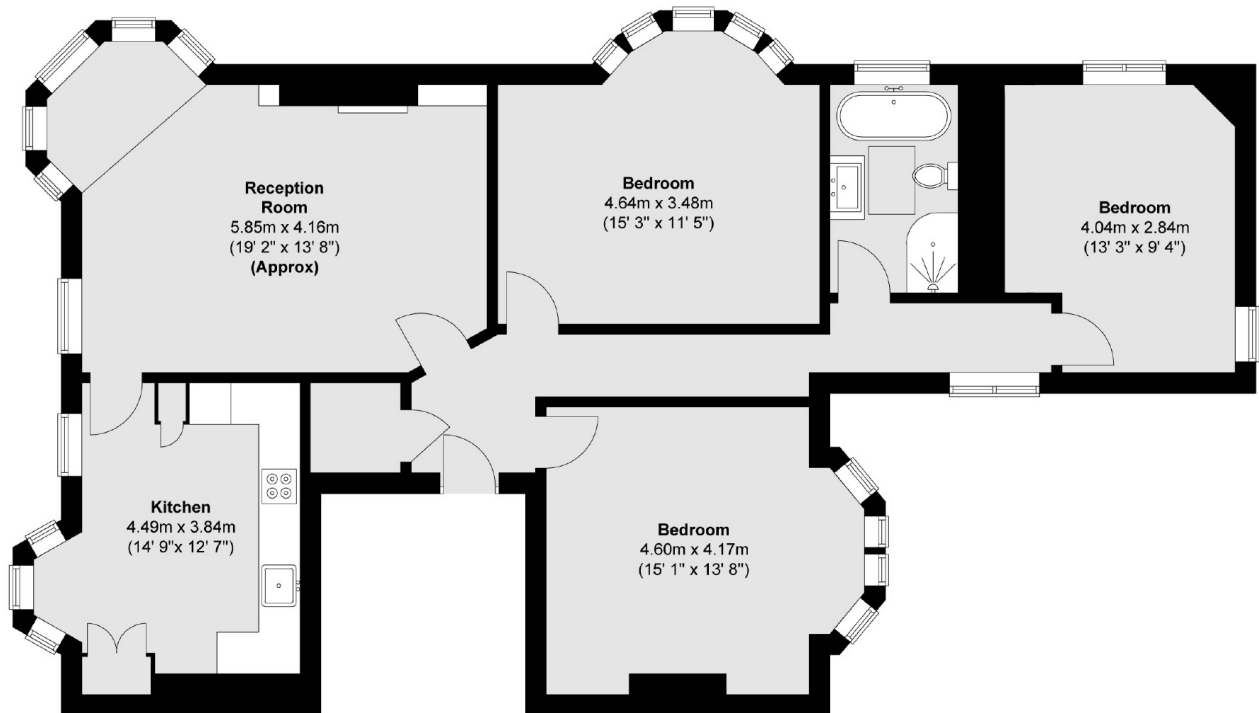


This property is opposite Streatham Common with nearby amenities. There are several local independent pubs, as well as numerous supermarkets and leisure centres. Access to central London is via Streatham or Streatham Common railway stations, both within easy reach, which together provide several services to The City and West End.









Total area (approx.) : 112.2 sq. m (1208 sq. ft)

Jacksons Streatham  
1-3 De Montfort Parade  
Streatham High Road  
Streatham  
London  
SW16 1BU

Energy Rating: C We aim to make our particulars both accurate and reliable. However they are not guaranteed; nor do they form part of an offer or contract. If you require clarification on any points then please contact us, especially if you're traveling some distance to view. Please note that appliances and heating systems have not been tested and therefore no warranties can be given as to their good working order.