



Heybridge Avenue, SW16

£500,000

A modernised, well furnished Victorian split level conversion flat. This property has been refurbished to a high standard and is complete with an open plan kitchen and two sizeable double bedrooms.

- Modern Victorian Split Level
- Two Double Bedrooms
- Popular Central location
- Share of Freehold
- Close to Streatham Common
- Chain Free

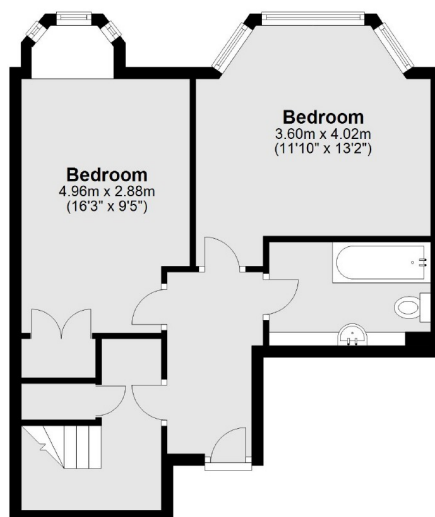


Heybridge Avenue, a wide, tree lined street running off Streatham common itself is located in a quiet conservation area within very close proximity of the main amenities of Streatham High Street including the Streatham hub leisure centre, restaurants, bars, café's and two large supermarkets. The property is also a short distance from the open spaces of the Rookery Gardens and Norwood Grove. Local transport includes Streatham with swift links to London Bridge and Streatham Common with links to Victoria via Clapham Junction.

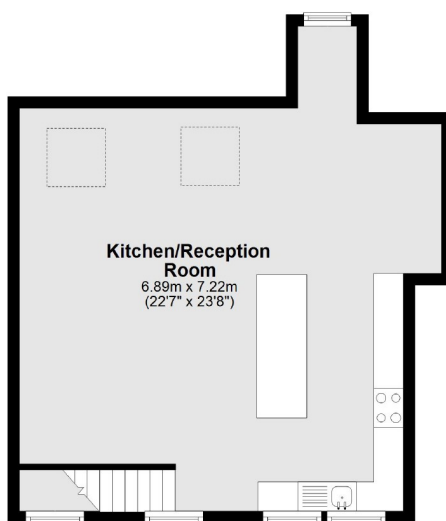




First Floor



Second Floor



Total area: approx. 93.2 sq. metres (1002.9 sq. feet)

Jacksons Streatham
1-3 De Montfort Parade
Streatham High Road
Streatham
London
SW16 1BU

Energy Rating: C We aim to make our particulars both accurate and reliable. However they are not guaranteed; nor do they form part of an offer or contract. If you require clarification on any points then please contact us, especially if you're traveling some distance to view. Please note that appliances and heating systems have not been tested and therefore no warranties can be given as to their good working order.