



Broxholm Road, SE27

£475,000

This deluxe two bedroom garden flat is situated on the highly desirable Broxholm Road. The current owners have refurbished the property and maintained it to the highest standard while retaining original period features.

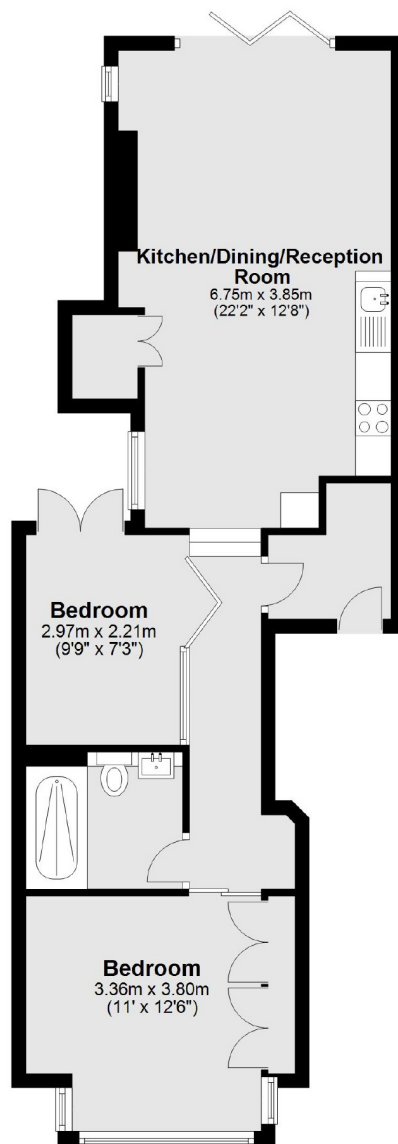
- Edwardian Conversion
- Private South Facing Garden
- Two Bedrooms
- Immaculate Condition
- Nearby Amenities & Transport
- West Norwood



Broxholm Road is located on the borders of Streatham Hill and West Norwood and provides easy access to both Streatham Hill and West Norwood with links to London Victoria and Tulse Hill mainline station which offers services via the Thameslink. Streatham High Road is a stones throw away with its vast array of transport links, shopping and leisure amenities.







Total area: approx. 57.8 sq. metres (622.5 sq. feet)

Jacksons Streatham
1-3 De Montfort Parade
Streatham High Road
Streatham
London
SW16 1BU

Energy Rating: C We aim to make our particulars both accurate and reliable. However they are not guaranteed; nor do they form part of an offer or contract. If you require clarification on any points then please contact us, especially if you're traveling some distance to view. Please note that appliances and heating systems have not been tested and therefore no warranties can be given as to their good working order.