



Garrick Close, SW18

£2,995 PCM

A four bedroom terraced house with a private rear garden and off street parking. Including a reception room with space for dining, modern fitted kitchen, four bedrooms and two bathrooms.

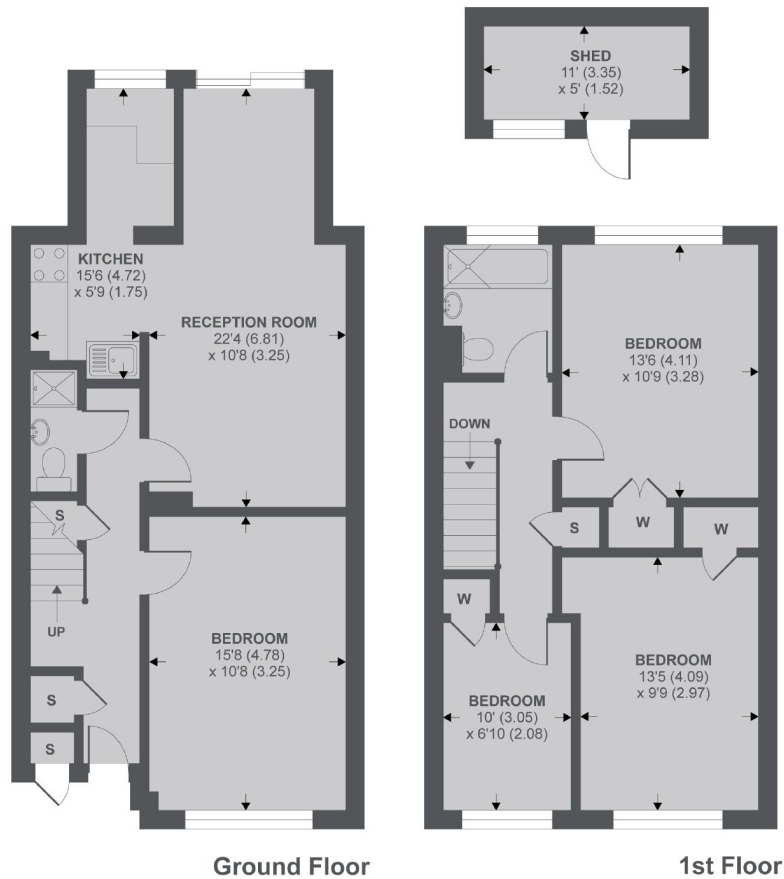
- Terraced House
- Four Bedrooms
- Two Bathrooms
- Off Street Parking
- Private Rear Garden
- Furnished

For further information on the costs associated with renting a property, please pop into our office or visit our website.



Located within close proximity to both Clapham Junction & Wandsworth Town BR Stations.





APPROX FLOOR AREA 1099 SQ.FT 102 SQ.M
 OUTBUILDINGS APPROX FLOOR AREA 55 SQ.FT 5.1 SQ.M
 Copyright nichecom.co.uk 2019 REF : 524531

Jacksons Wandsworth
 507 Old York Road
 London
 SW18 1TF
 020 8875 8899
wandsworth.lettings@jacksonsestateagents.com

Energy Rating: C We aim to make our particulars both accurate and reliable. However they are not guaranteed; nor do they form part of an offer or contract. If you require clarification on any points then please contact us, especially if you're traveling some distance to view. Please note that appliances and heating systems have not been tested and therefore no warranties can be given as to their good working order.