

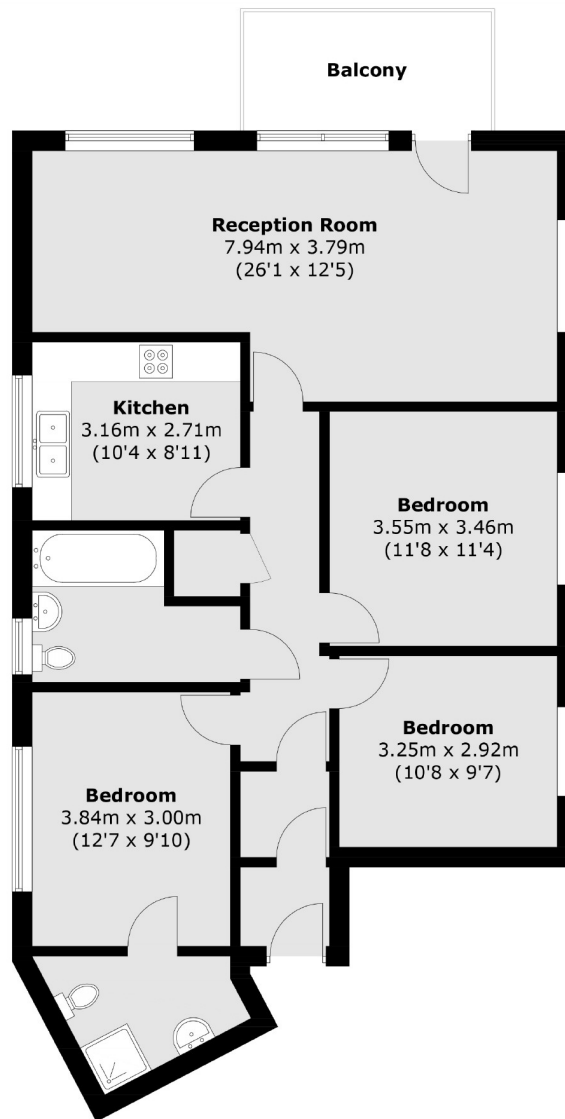


Limerick Close, SW12

£625,000

Located in a fantastic gated development, this top floor flat comprises of three double bedrooms, two bathrooms and a south facing balcony. It is a spacious flat offering a large reception room, separate kitchen and private parking.

- Top Floor Flat
- South Facing Balcony
- Three Double Bedrooms
- Two Bathrooms
- Private Parking
- Gated



Total area (approx.): 95.7 sq. m (1,030.1 sq. ft)
Balcony area: 6.7 sq. m (72.1 sq. ft)

Jacksons Balham
8-11 Balham Station Road
London
SW12 9SG
020 8675 6555
balham.sales@jacksonsstateagents.com

Energy Rating: B We aim to make our particulars both accurate and reliable. However they are not guaranteed; nor do they form part of an offer or contract. If you require clarification on any points then please contact us, especially if you're traveling some distance to view. Please note that appliances and heating systems have not been tested and therefore no warranties can be given as to their good working order.