



## Lordship Lane, SE22

**£1,950 PCM**

A modern two bedroom, two bathroom second floor apartment which includes a Juliette balcony, excellent storage and off street parking.

- Two Double Bedrooms
- Two Bathrooms
- Juliette Balcony
- Off Street Parking

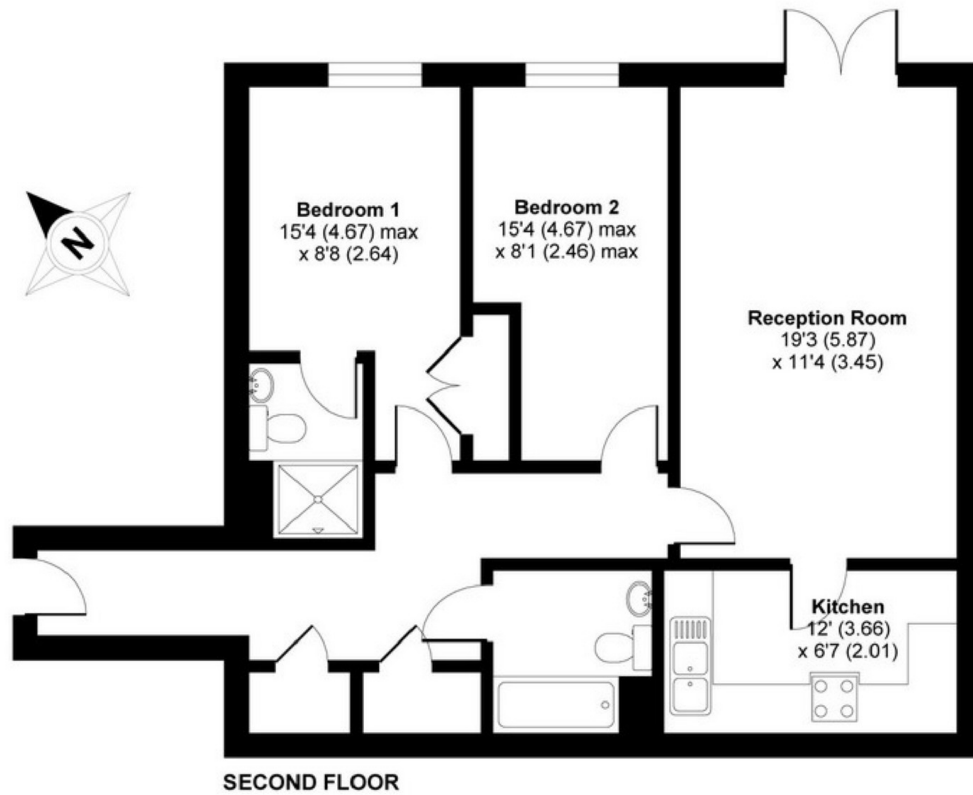
For further information on the costs associated with renting a property, please pop into our office or visit our website.



The property is within easy reach of East Dulwich and Forest Hill's array of transport links and amenities, and there are also a number of bus links situated immediately outside the development.







APPROX. GROSS INTERNAL FLOOR AREA 798 SQ FT 74.1 SQ METRES

**Gloucester Court, Lordship Lane, London, SE22**

Copyright nichecom.co.uk 2015 Produced for Jacksons the Independent Estate Agents REF : 54768

Jacksons Streatham  
1-3 De Montfort Parade  
Streatham High Road  
Streatham  
London  
SW16 1BU

Energy Rating: C We aim to make our particulars both accurate and reliable. However they are not guaranteed; nor do they form part of an offer or contract. If you require clarification on any points then please contact us, especially if you're traveling some distance to view. Please note that appliances and heating systems have not been tested and therefore no warranties can be given as to their good working order.