



Charlmont Road, SW17

£3,200

A well presented three double bedroom, split level Victorian conversion flat. The property consists of a large reception room, contemporary kitchen and integrated appliances, two bathrooms,

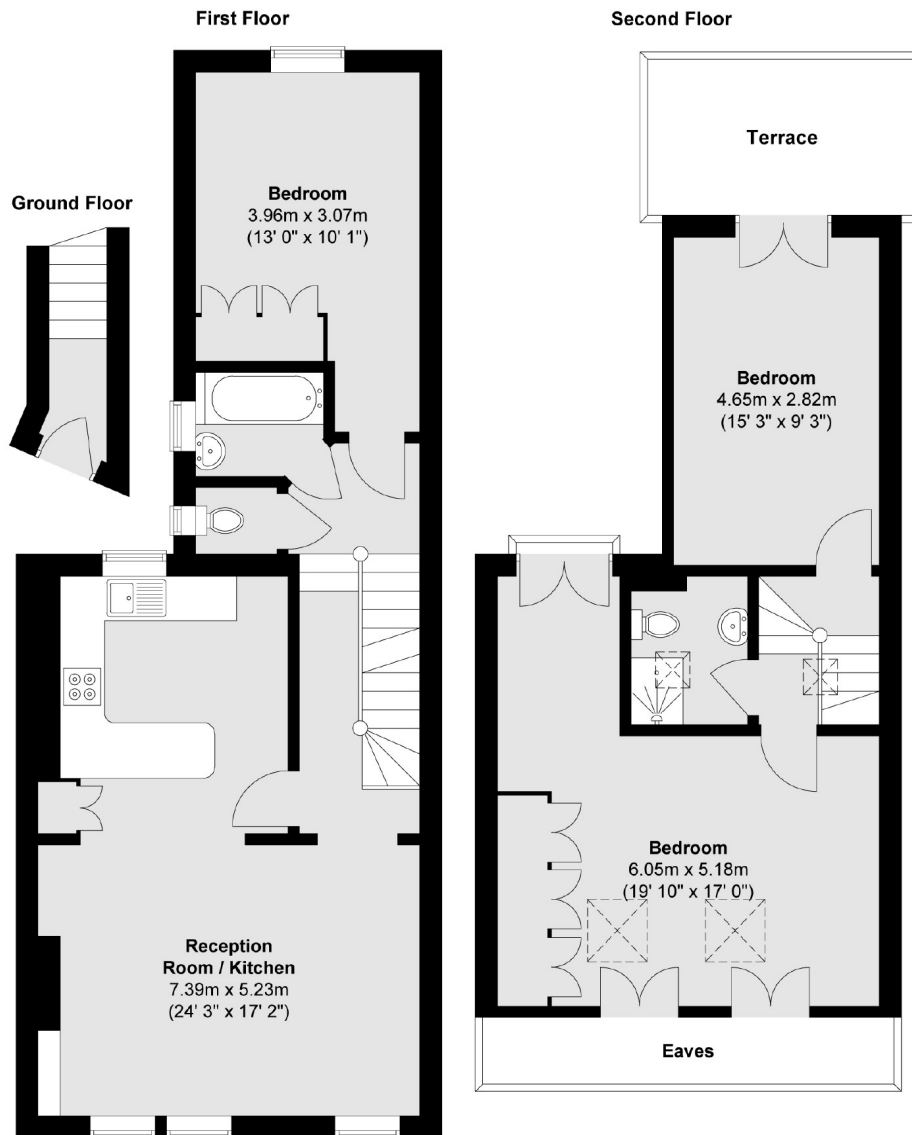
- Victorian Conversion Flat
- Three Double Bedrooms
- Two Bathrooms
- Stunning Lounge/Kitchen
- Private Rear Garden
- Private Roof Terrace

For further information on the costs associated with renting a property, please pop into our office or visit our website.



Charlmont Road is popular road located between Tooting Broadway and Tooting rail stations and is also only minutes from the many bars, restaurants and shops of Tooting Broadway.





Total area (approx.) : 106.9 sq. m (1151 sq. ft)
 Total balcony area (approx.) : 0.2 sq. m (2 sq. ft)
 Total terrace area (approx.) : 7 sq. m (75 sq. ft)

Jacksons Tooting
 26 Tooting Bec Road
 London
 SW17 8BD
 020 8767 0522
tooting.lettings@jacksonsstateagents.com

Energy Rating: We aim to make our particulars both accurate and reliable. However they are not guaranteed; nor do they form part of an offer or contract. If you require clarification on any points then please contact us, especially if you're traveling some distance to view. Please note that appliances and heating systems have not been tested and therefore no warranties can be given as to their good working order.