



## Tulse Hill, SW2

£1,800 PCM

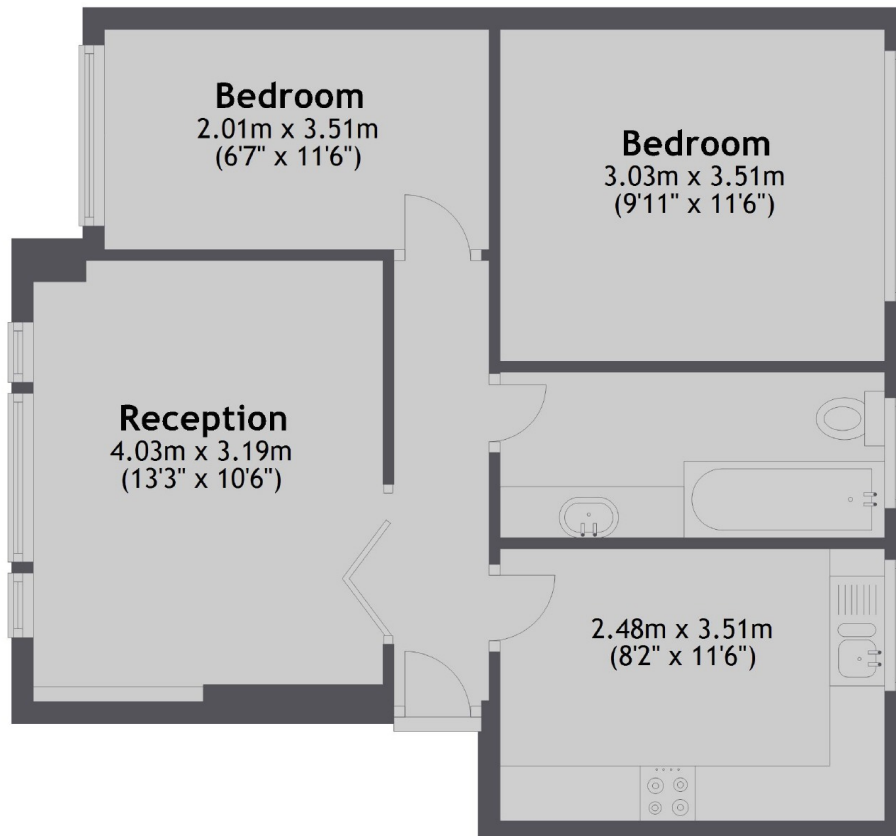
A well presented top floor apartment located in a private development off Tulse Hill. The property has recently been refurbished and offers good sized and modern accommodation throughout.

Ethelworth Court is located well for the many shops, bars and restaurants in Brixton and Tulse Hill as well as extremely good connections to and from the City via tube and train.

- Two Bedrooms
- Well Presented
- Close to Tulse Hill Station
- Communal Garden
- Residents Parking
- Private Development

For further information on the costs associated with renting a property, please pop into our office or visit our website.

## First Floor



Total area: approx. 50.1 sq. metres (539.4 sq. feet)

Jacksons Streatham  
1-3 De Montfort Parade  
Streatham High Road  
Streatham  
London  
SW16 1BU  
020 8677 9900

Energy Rating: D We aim to make our particulars both accurate and reliable. However they are not guaranteed; nor do they form part of an offer or contract. If you require clarification on any points then please contact us, especially if you're traveling some distance to view. Please note that appliances and heating systems have not been tested and therefore no warranties can be given as to their good working order.