



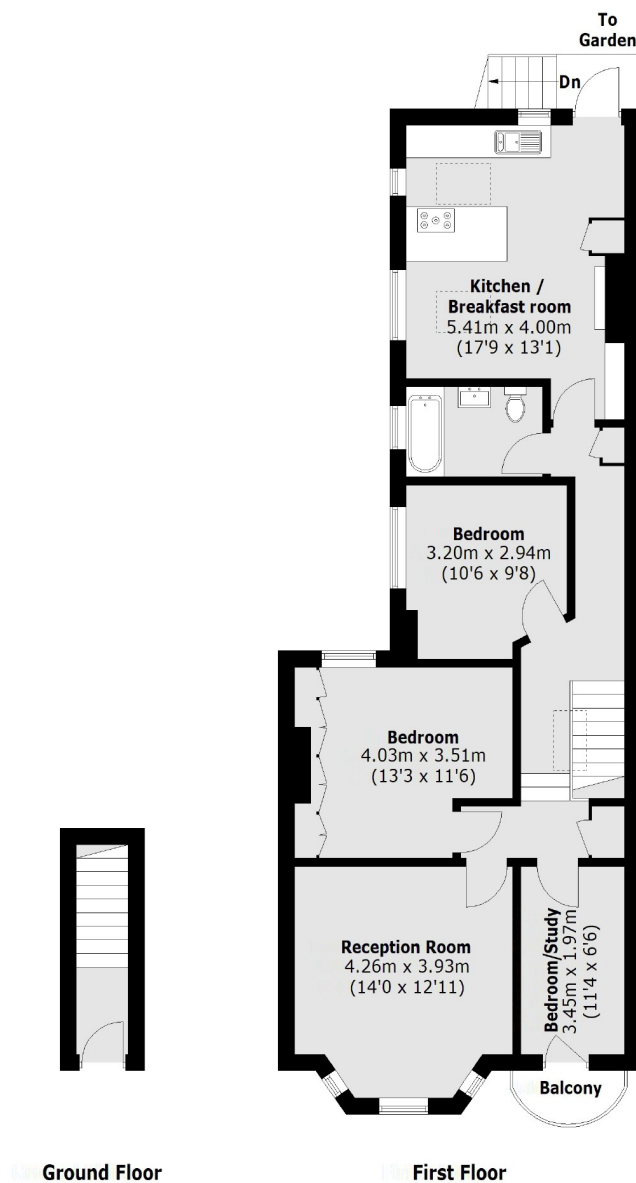
## Emmanuel Road, SW12

£825,000

A superbly presented three bedroom first floor maisonette with private garden located in the ever popular the Hyde Farm area of Balham.

The property has been refurbished to a high standard throughout and comprises, two double bedrooms, additional bedroom, living room with views of Tooting Bec Common, Bathroom, and kitchen dining area with doors leading down to the private garden.

- Maisonette
- Three Bedrooms
- Private Garden
- First Floor
- Extension Potential (STPP)
- Hyde Farm Location



Total area (approx.): 88.7 sq. m (954.8 sq. ft)

Jacksons Balham  
8-11 Balham Station Road  
London  
SW12 9SG  
020 8675 6555  
[balham.sales@jacksonsestateagents.com](mailto:balham.sales@jacksonsestateagents.com)

Energy Rating: E We aim to make our particulars both accurate and reliable. However they are not guaranteed; nor do they form part of an offer or contract. If you require clarification on any points then please contact us, especially if you're traveling some distance to view. Please note that appliances and heating systems have not been tested and therefore no warranties can be given as to their good working order.