



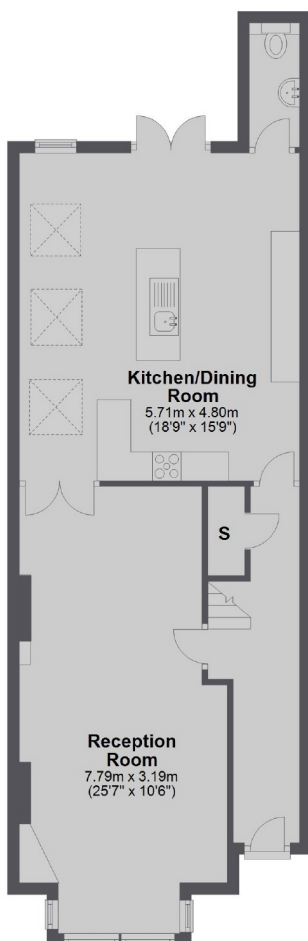
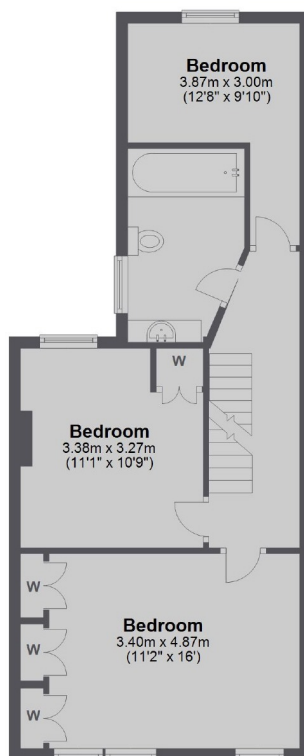
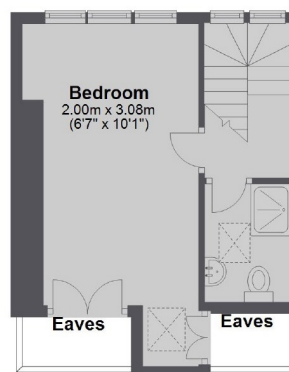
Skelbrook Street, SW18

£3,800 PCM

A four bedroom Victorian terraced house boasting Victorian features throughout and a well kept private rear garden.

- Victorian Terraced House
- Beautiful Period Features
- Impressive Kitchen/Breakfast Room
- Four Bedrooms
- Private Rear Garden
- Unfurnished

For further information on the costs associated with renting a property, please pop into our office or visit our website.

Ground Floor

First Floor

Second Floor


Total area: approx. 139.5 sq. metres (1501.2 sq. feet)

Jacksons Earlsfield
372-374 Garratt Lane
Earlsfield
London
SW18 4ES
020 8971 7070
earlsfield.lettings@jacksonsestateagents.com

Energy Rating: E We aim to make our particulars both accurate and reliable. However they are not guaranteed; nor do they form part of an offer or contract. If you require clarification on any points then please contact us, especially if you're traveling some distance to view. Please note that appliances and heating systems have not been tested and therefore no warranties can be given as to their good working order.