

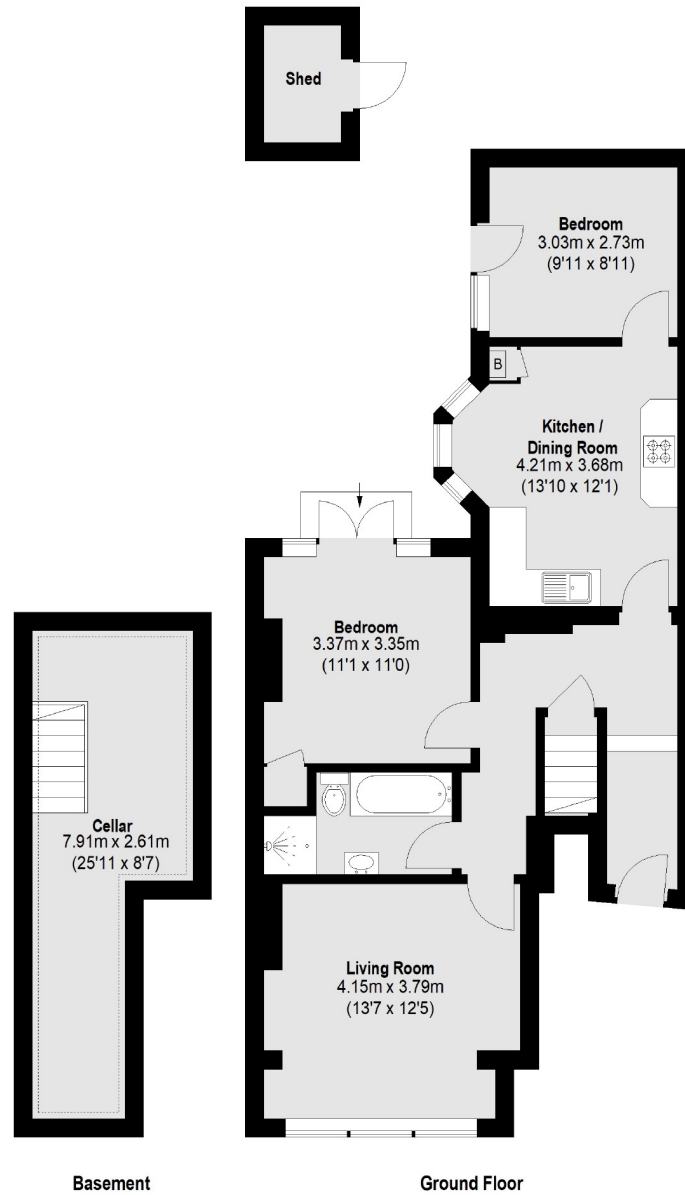


## Marius Road, SW17

£700,000

A two bedroom Ground floor flat located in the boundaries triangle. This spacious home is in lovely condition with the reception room to the front as well as a separate kitchen/dining space. There are two bedrooms and a stylish bathroom as well as a basement.

- Two Bedrooms
- Boundaries Triangle
- Long Lease
- Private Garden
- Ground Floor
- Cellar



Total area (approx.): 86.42 sq. m (930 Sq. ft)

Jacksons Balham  
8-11 Balham Station Road  
London  
SW12 9SG  
020 8675 6555  
balham.sales@jacksonsstateagents.com

Energy Rating: D We aim to make our particulars both accurate and reliable. However they are not guaranteed; nor do they form part of an offer or contract. If you require clarification on any points then please contact us, especially if you're traveling some distance to view. Please note that appliances and heating systems have not been tested and therefore no warranties can be given as to their good working order.