



Heybridge Avenue, SW16

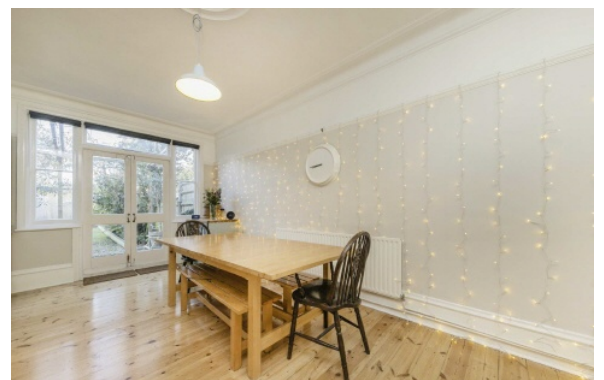
£950,000

A semi-detached Victorian Family Home that resides on a beautiful road that stretches alongside Streatham Common Park and is close to the Rookery Gardens and Streatham Common Station. This property benefits

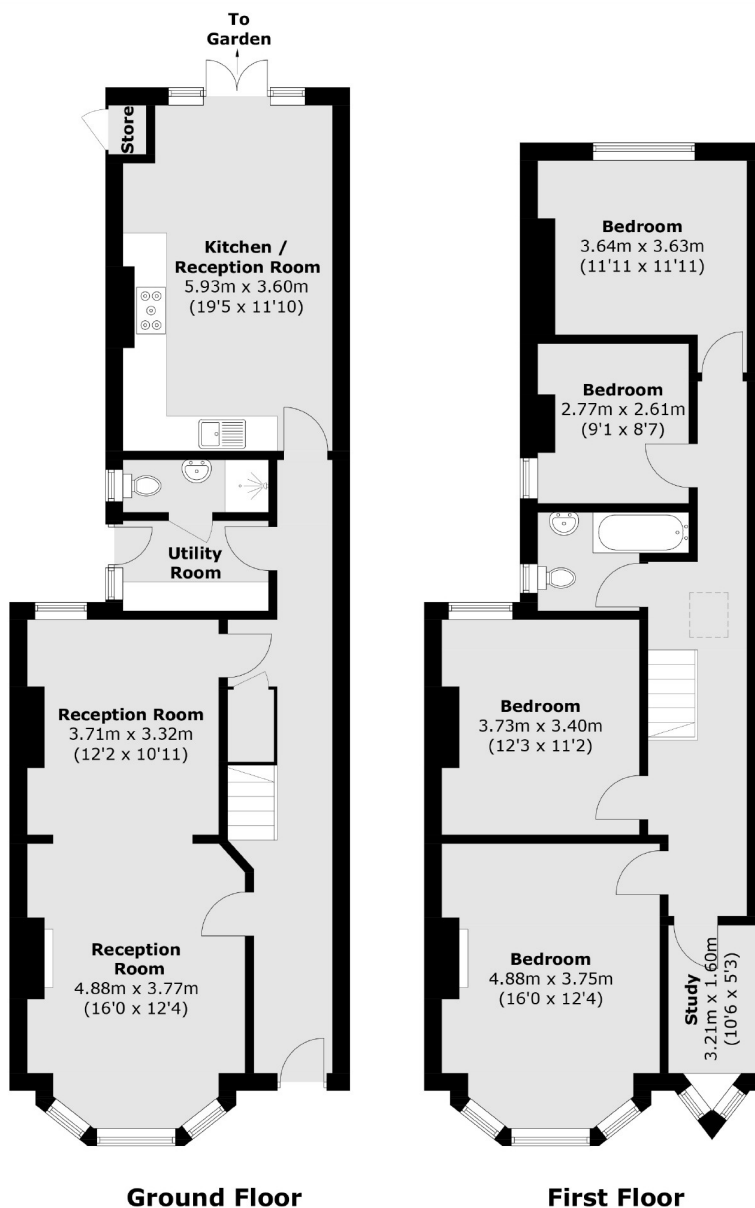
- Semi-detached Victorian Home
- Four Bedrooms
- Off-Street Parking
- Large Rear Garden
- Extension Potential
- Close to Transport Links



Heybridge Avenue, a wide, tree lined street running off Streatham common itself is located in a quiet conservation area within very close proximity of the main amenities of Streatham High Street including the Streatham hub leisure centre, restaurants, bars, café's and two large supermarkets. The property is also a short distance from the open spaces of the Rookery Gardens and Norwood Grove. Local transport includes Streatham with swift links to London Bridge and Streatham Common with links to Victoria via Clapham Junction.







Total area (approx.): 147.1 sq. m (1583.4 sq. ft)
Store: 0.5 sq. m (5.4 sq. ft)

Jacksons Streatham
1-3 De Montfort Parade
Streatham High Road
Streatham
London
SW16 1BU

Energy Rating: D We aim to make our particulars both accurate and reliable. However they are not guaranteed; nor do they form part of an offer or contract. If you require clarification on any points then please contact us, especially if you're traveling some distance to view. Please note that appliances and heating systems have not been tested and therefore no warranties can be given as to their good working order.